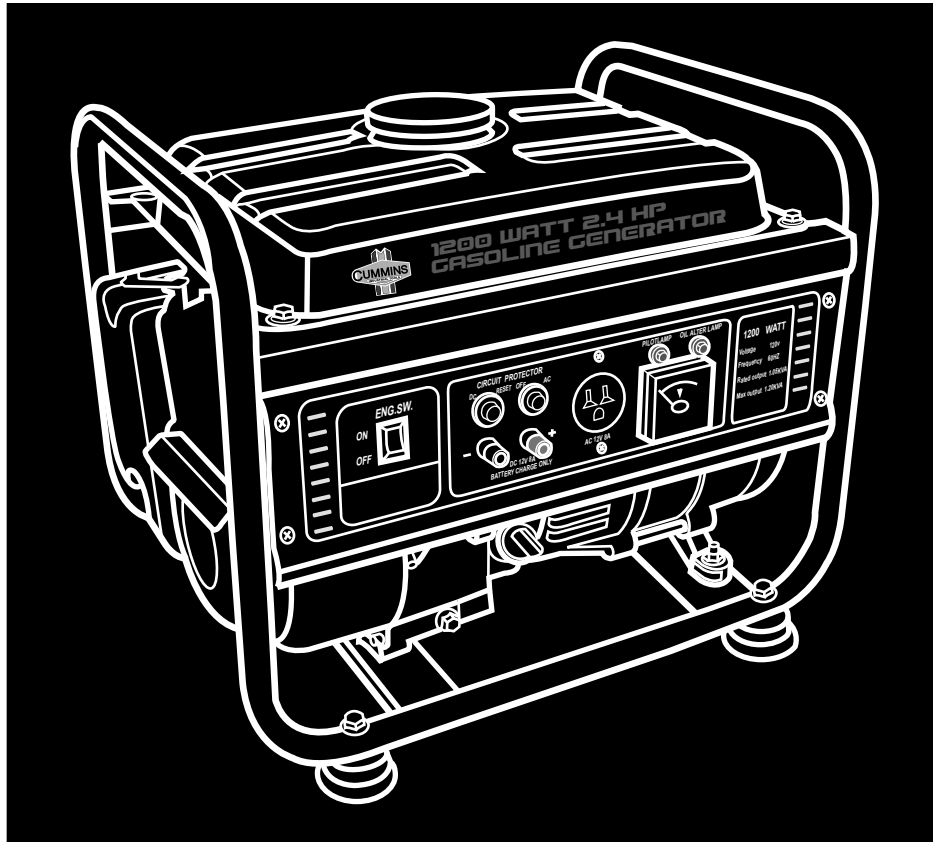




Assembly & Instruction Manual

ITEM 6225

VENDOR: A | SERIES: 2



1200WATT 2.4HP GASOLINE GENERATOR

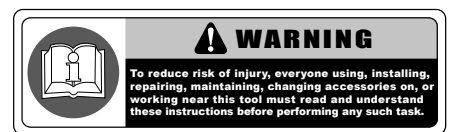
Tap Enterprises Inc. DBA Cummins Tools is not liable for damages caused to ones' property or self resulting from the misuse of this generator. Misuse is defined as not following all regulations and guidelines outlined in the owner's manual.

THANK YOU FOR BUYING CUMMINS INDUSTRIAL TOOLS
You can purchase additional items at
www.cumminstools.com

SAVE THIS MANUAL FOR FUTURE REFERENCE



Customer Service Postal Address:
1290 35 Road
Minden, NE 68959
Voice: 1-(308) 832-2070
Fax: 1-(308) 832-2069



Your new 1200WATT 2.4HP GASOLINE GENERATOR has been engineered and manufactured to Cummins Industrial Tools high standards for dependability, ease of operation, and operator safety. Pay close attention to the Rules for Safe Operation, Warnings, and Cautions. If you use your machine properly and only for what it is intended, you will enjoy years of safe, reliable service.

TABLE OF CONTENTS

■ Introduction	1
■ General Safety Rules	2
■ Specific Safety Rules	3
■ Product Specifications	4
■ Unpacking	5
■ Control Function	5
■ Pre-Operation Check	5-6
■ Operation	6-7
■ Periodic Maintenance	8-9
■ Troubleshooting	10
■ Storage	10
■ Generator Scheme Diagram	11
■ Accessories	11
■ Guarantee And Parts	11
■ Exploded Diagram & Part List	12-13

INTRODUCTION

- THIS PRODUCT has many features for making the use of this product more pleasant and enjoyable. Safety, performance, and dependability have been given top priority in the design of this product making it easy to maintain and operate.

WARNING:

Do not attempt to use this product until you thoroughly read and completely understand the operator's manual. Pay close attention to the safety rules, including Dangers, Warnings, and Cautions. If you use your product properly and only as intended, you will enjoy years of safe, reliable service.



Look for this symbol to point out important safety precautions. It means attention!!! Your safety is involved.

WARNING:



The operation of any tool can result in foreign objects being thrown into your eyes, which can result in severe eye damage. Before beginning operation, always wear safety goggles or safety glasses with side shields and a full face shield when needed. We recommend Wide Vision Safety Mask for use over eyeglasses or standard safety glasses with side shields. Always wear eye protection which is marked to comply with ANSI Z87.1.

GENERAL SAFETY RULES

⚠ WARNING: When using tool, basic safety precautions should always be followed to reduce the risk of personal injury and damage to equipment. Read all instructions before using the tool!

- **Work area conditions.** Cluttered areas invite injuries.
- **Additional work area conditions.** Do not use machines or power tools in damp or wet locations. Do not expose to rain. Keep work area well lighted.
- **Keep children away.** Children must never be allowed in the work area. Do not let them handle machines, tools or extension cords.
- **Store idle equipment.** When not in use, tools must be stored in a dry location to inhibit rust. Always lock up tools and keep out of reach of children.
- **Use the right tool for the job.** Do not attempt to force a small tool or attachment to do the work of a larger industrial tool. There are certain applications for which this tool was designed. It will do the job better and more safely at the rate for which it was intended. Do not modify this tool and do not use this tool for a purpose for which it was not intended.
- **Dress properly.** Do not wear loose clothing or jewelry as they can be caught in moving parts. Protective, electrically non-conductive clothes and non-skid footwear are recommended when working. Wear restrictive hair covering to contain long hair.
- **Use eye protection.** Always wear ANSI approved impact safety glasses underneath a full face shield during use. Also, wear heavy duty work gloves.
- **Do not overreach.** Keep proper footing and balance at all times. Do not reach over or across running machines.
- **Maintain tools with care.** Keep tools sharp and clean for better and safer performance. Follow instructions for lubricating and changing accessories. The handles must be kept clean, dry, and free from oil and grease at all times.
- **Remove adjusting keys and wrenches.** Check that keys and adjusting wrenches are removed from the tool or machine work surface before starting work.
- **Stay alert.** Watch what you are doing, use common sense. Do not operate any tool when you are tired.
- **Check for damaged parts.** Before using any tool, any part that appears damaged should be carefully checked to determine that it will operate properly and perform its intended function. Any part that is damaged should be replaced.
- **Replacement parts and accessories.** When servicing, use only identical replacement parts. Use of any other parts will void the warranty. Only use accessories intended for use with this tool. Approved accessories are available from Cummins Industrial Tools.
- **Do not operate tools if under the influence of alcohol or drugs.** Read warning labels on prescriptions to determine if your judgment or reflexes are impaired while taking drugs. If there is any doubt, do not operate the tool.

⚠ WARNING: The warnings, cautions, and instructions discussed in this instruction manual can not cover all possible conditions and situations that may occur. It must be understood by the operator that common sense and caution are factors which can not be built into this product, but must be supplied by the operator.

SPECIFIC SAFETY RULES

⚠ WARNING: PLEASE READ AND UNDERSTAND THIS MANUAL COMPLETELY BEFORE OPERATING THE MACHINE.

EXHAUST FUMES ARE POISONOUS

- Never operate the engine in a closed area or it may cause unconsciousness and death within a short time. Operate the engine in a well ventilated area.

FUEL IS HIGHLY FLAMMABLE AND POISONOUS

- Always turn off the engine when refueling.
- Never refuel while smoking or in the vicinity of an open flame.
- If you swallow any fuel, inhale fuel vapor, or allow any to get in your eyes, see your doctor immediately. If any fuel spills on your skin or clothing, immediately wash with soap and water and change your clothes.
- When operating or transporting the machine, be sure it is kept upright. If it tilts, fuel may leak from the carburetor or fuel tank.

ENGINE AND MUFFLER MAY BE HOT

- Place the machine in a place where pedestrians or children are not likely to touch the machine.
- Avoid placing any flammable materials near the exhaust outlet during operation.
- The machine must be kept away from the buildings and other equipments at least one meter, for it may be overheated.

ELECTRIC SHOCK PREVENTION

- Never operate the engine in rain or snow.
- Never touch the machine with wet hands or electrical shock will occur.
- Be sure to ground (earth) the generator.

NOTE: Use ground (earth) lead of sufficient current capacity.

Group (earth) Lead
Diameter: 0.12mm (0.005")/ampere
EX: 10Ampere x 0.055"

CONNECTION NOTES

- Avoid connecting the generator to commercial power outlet.
- Avoid connecting the generator in parallel with any other generator.

⚠ CAUTION	
	CUMMINS TOOLS IS NOT RESPONSIBLE FOR LOSS OF PROPERTY AND OR DAMAGES RESULTING FROM INSTALLATION OF THIS GENERATING UNIT TO YOUR HOME OR BUSINESS.

⚠ WARNING	
	INSTALLER MUST BE KNOWLEDGEABLE IN ELECTRICAL WIRING METHODS AND LOCAL ELECTRICAL CODES. INSTALLER SHOULD READ ALL INSTRUCTIONS BEFORE INSTALLING THESE UNITS. MANUFACTURER ACCEPTS NO RESPONSIBILITY FOR ACCIDENTS CAUSED BY INSTALLER.

⚠ WARNING	
	WHEN CONNECTING GENERATOR DIRECTLY TO HOME OR BUSINESS A HOME GENERATOR HOOK UP KIT MUST BE USED. THE CAN BE PURCHASED AT MOST LOCAL HARDWARE OR HOME IMPROVEMENT STORES.

PRODUCT SPECIFICATIONS

GENERATOR:

Type	Single phase, brushless
Peak power(KW)	1.2
Rate output (KW)	1.05
Rated speed (rpm)	3600
AC Rated voltage(V)	115
AC Rated current(A)	9.1
Rated frequency(Hz)	60
Power factor COSφ	1.0
DC Rated voltage (V)	12
DC Rated current(A)	8

ENGINE:

ENGINE	
Type	single cylinder,4-stroke, forced air cooling
Bore×Stroke (mm)	52×38
Displacement(CC)	81
Compression Ratio	7.7:1
Max. output(KW/rpm)	1.70/4000
Lubricate	Mixed oil brume lubrication
Fuel No	90# gasoline
Oil No	Purpose oil for 4-stroke
Starting	Manual starting
Output Mode	Horizontal cone-shaped shaft output
Ignition	T.C.I

UNPACKING

INSTRUCTIONS

When unpacking the tool:

- Carefully remove the tool and accessories from the box.
- Make sure that all items listed in the packing list are included.
- Inspect the tool carefully to make sure no breakage or damage occurred during shipping.
- Do not discard the packing material until you have carefully inspected and satisfactorily operated the tool.

⚠ WARNING: If any part are missing do not operate the tool until the missing parts are replaced. Failure to do so could result in possible serious personal injury.

CONTROL FUNCTION

ENGINE SWITCH

- The engine switch controls the ignition system.

1- "ON"

- Ignition circuit is switched on.
- The engine can be started.

2- "OFF"

- Ignition circuit is switched off.
- The engine will not run.

AC BREAKER (N.F.B)

- The AC breaker turns off automatically when the load exceeds the generator rated output.

CAUTION: Reduce the load to within specified generator rated output if the AC breaker (N.F.B) turns off.

DC BREAKER (N.F.B)

- The DC breaker turns off automatically when the load exceeds the generator rated output.

PRE-OPERATION CHECK

NOTE: Pre-operation checks should be made each time when the generator is used.

⚠ WARNING: The engine and muffler will be very hot after the engine has been run. Avoid touching the engine and muffler while they are still hot with any part of your body or clothing during inspection or repair.

⚠ WARNING: Fuel is highly flammable. Check "SAFETY INFORMATION" carefully before refueling. Do not fill above the top of the fuel fill or it may overflow when the fuel heats up later and expands. Add fuel until level is approximately 1 inch from top of fuel fill. After refueling, make sure the tank cap is tightened securely.

PRE-OPERATION CHECK

FUEL

- Make sure there is sufficient fuel in the tank.

Recommended fuel: Unleaded gasoline

Fuel tank capacity: 5L

ENGINE OIL

- Make sure the engine oil is filled to point of overflowing at oil fill cap. Do not overfill. Add oil as necessary.

Recommended oil:

A SAE #30 or 10W-30
or 10W 40

B SAE #20 or 10W-30
or 10W-40

C SAE 10W or 10W-30
or 10W-40

Above 35°C (95° F): SAE #40

- Oil capacity: 0.37L

GROUNDING

- Make sure to ground the generator.

BATTERY

- The battery (12V) is charged when the engine is running.

⚠ WARNING: Battery electrolyte is poisonous and dangerous, causing severe burns, etc. It contains sulfuric acid. Avoid contacting with skin, eyes or clothing. Battery produce explosive gases. Keep sparks, flame, cigarettes, etc. away. Ventilate when charging or using in closed space. Always cover eyes when working near batteries. Keep out of reach of children.

OPERATION


CAUTION: The generator has been shipped without engine oil. Fill oil when starting.

STARTING THE ENGINE

NOTE:

- Before starting the engine, do not connect the electric apparatus.
 - Turn the AC switch (N.F.B) to "OFF".
- 1- Turn the fuel cock lever to "ON".

OPERATION

- 2- Turn the engine switch to “ON”.
- 3- Turn the choke lever to the “  ”position. The choke is not required to start a warm engine.
- 4- Pull slowly on the recoil starter until it is engaged, then pull it briskly. Take your hand off the recoil starter immediately after the engine starts.
- 5- Warm up the engine. Move choke lever toward the operating position a short distance at a time over several seconds in warm weather or minutes in cold weather. Let engine run smoothly before each change.
- 6- Turn the choke lever back to the operating position.

CONNECTION

AC OUTPUT

CAUTION:

- Be sure the electric apparatus is turned off before plugging in.
 - Be sure the total load is within generator rated output.
 - Be sure the socket load current is within socket rated current.
- 1- Wind the power lead 2 or 3 turns around frame.
 - 2- Start the engine.
 - 3- Plug into AC socket.
 - 4- Make sure the pilot light is on or voltage meter indicates the rated voltage.
 - 5- Turn on the electric apparatus.ge.
- Reduce the load to within specified generator rated output if the AC switch (N.F.B.) turn off.

DC OUTPUT

NOTE:

- Battery charging (if equipped).
- Red lead to positive (+), black to negative (-).

CAUTION:

- This battery charging system is intended to recharge weak batteries, not to “BOOST START” vehicles. Before charging a storage battery, please read the battery in the user’s manual.

STOPPING THE ENGINE

NOTE:

- Turn off the electric apparatus.
- 1- Disconnect the electric apparatus.
 - 2- Turn the engine switch to “OFF”.
 - 3- Turn the fuel cock lever to “OFF”.

PERIODIC MAINTENANCE

MAINTENANCE CHART

■ Regular maintenance is most important for the best performance and safe operation.

Item	Remarks	Pre-Operation check (daily)	Initial 1 month or 20 Hr	Every 3 months or 50 Hr	Every 6 Months or 100Hr	Every 12 months or 300Hr
Spark Plug	Check condition adjust gap and clean. Replace if necessary.			●		
Engine Oil	Check oil level	●				
	Replace		●		●	
Air Filter	Clean. Replace if necessary.			●		
Fuel Filter	Clean fuel filter. Replace if necessary.				●	
Valve Clearance	Check and adjust when engine necessary.					●
Fuel Line	Check fuel hose for crack or damage Re-place if necessary.	●				
Exhaust System	Check for leakage Retighten or replace gasket if necessary.	●				
	Check muffler screen.				●	
Carburetor	Check choke operation.	●				
Cooling system	Check fan damage.					●
Starting system	Check recoil starter operation.	●				
Decarbonization	Clean more frequently if necessary.					●
Fittings/ Fasteners	Check all fittings and fasteners correct if necessary.				●	

PERIODIC MAINTENANCE

ENGINE OIL REPLACEMENT

- 1- Place the machine on a level surface and warm up the engine for several minutes. Then stop the engine.
- 2- Remove the oil filler cap.
- 3- Place an oil pan under the engine. Remove the oil drain plug so that the oil can be completely drained.
- 4- Check the oil drain plug, gasket, oil filler cap and “o”-ring. If damaged replace.
- 5- Reinstall the oil drain plug.
- 6- Add engine oil to the upper level.

Recommended oil:

A SAE #30 OR 10W-30 OR 10W-40
B SAE #20 OR 10W-30 OR 10W-40
C SAE 10W OR 10W-30 OR 10W-40
Above 35°C (95F): SAE #40

NOTE:

Recommended engine oil classification:

API Service “ SE ” or “SF “; if not available, “SD”.

- Be sure no foreign material enters the crankcase.

AIR FILTER

CAUTION:

- Do not wring out the element. This could cause it to tear.
- Be sure the element sealing surface matches the air filter so there is no air leak.
- The engine should never run without the element sealing, excessive piston and or cylinder wear may result.

⚠ WARNING: Never refuel while smoke or in the vicinity of an open flame.

SPARK PLUG INSPECTION

Standard electrode color: Tan Color

Spark Plug Gap: 0.70.8mm(0.028-0.031in)

FUEL TANK FILTER

- 1- Clean with solvent.
- 2- Wipe off.

⚠ WARNING: Be sure the tank cap is tightened securely.

TROUBLESHOOTING

ENGINE WON'T START

1- Fuel systems

No fuel supplied to combustion chamber.

- No fuel in tank...Supply fuel.
- Clogged fuel line...Clean fuel line.
- Foreign matter in fuel cock...Clean fuel cock.
- Clogged carburetor...Clean carburetor.

2- Electrical systems

Poor spark

- Spark plug dirty with carbon or wet...Remove carbon or wipe spark plug insufficient.
- Faulty ignition system...Consult dealer.

3- Compression insufficient

- Worn out piston and cylinder...Consult dealer.
- Loose cylinder head nuts...Tighten nuts properly.
- Damaged gasket...Replace gasket.

STORAGE

- Long term storage of your machine will require some preventive procedures to guard against deterioration.

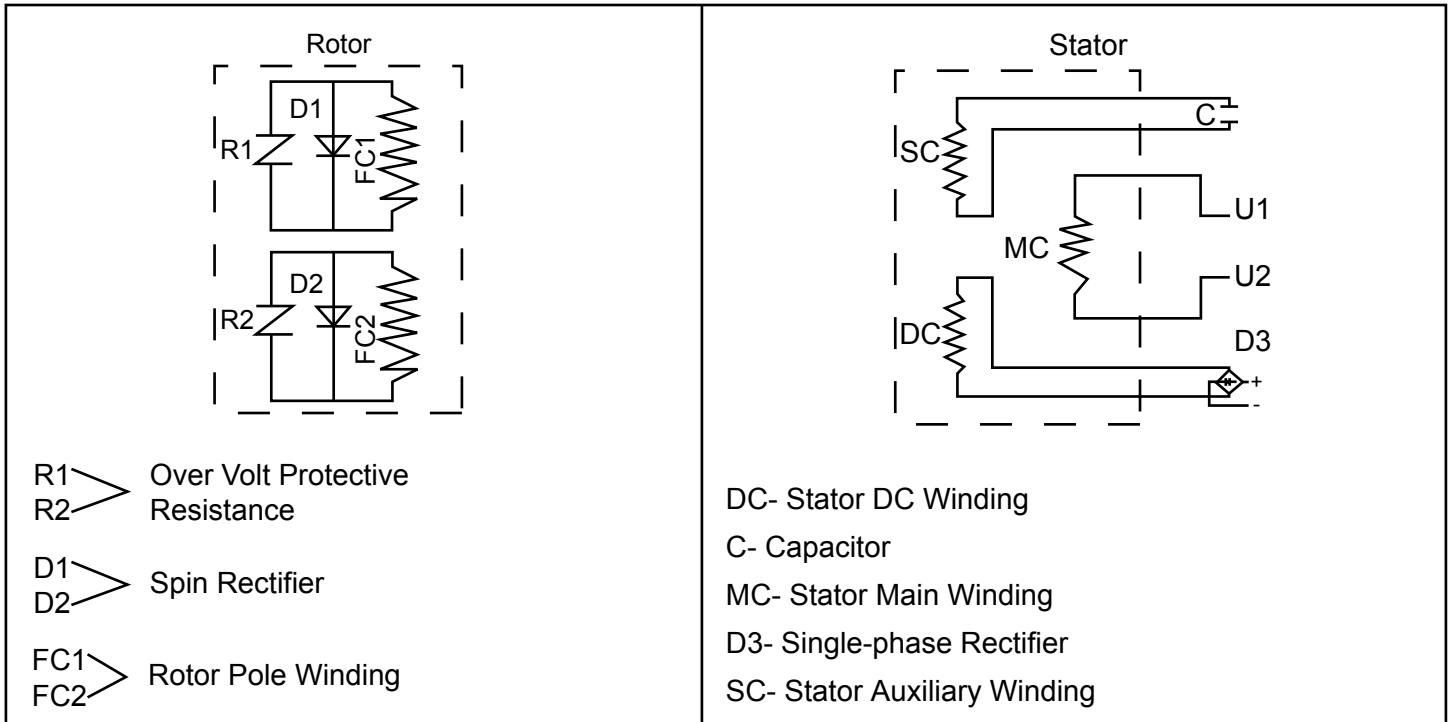
DRAIN THE FUEL

- Drain the fuel tank, fuel cock, and carburetor float bowl.

ENGINE

- 1- Pour in about one tablespoon of SAE 10W30 or 20W40 motor oil through the spark plug hole.
- 2- Use the recoil starter to turn the engine over several times (with ignition off).
- 3- Pull the recoil starter until you feel compression.
- 4- Stop pulling.
- 5- Clean exterior of the generator and apply a rust inhibitor.
- 6- Store the generator in a dry, well-ventilated place, with the cover place over it.
- 7- The generator must remain in a horizontal position.

GENERATOR SCHEME DIAGRAM



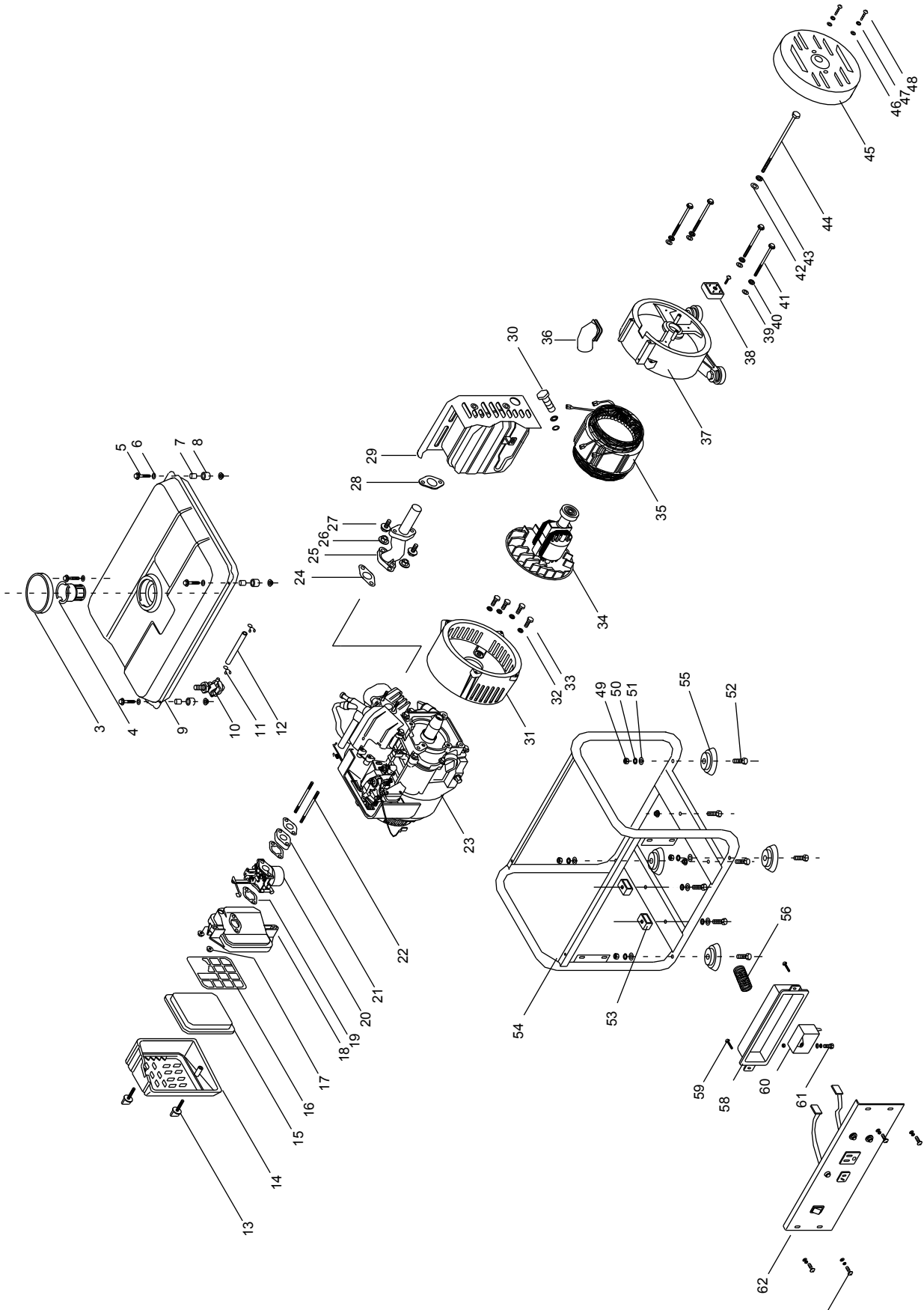
ACCESSORIES

- 1- User's manual
- 2- Spark plug sleeve
- 3- DC lead

GUARANTEE AND PARTS

This item is covered by a 90 days guarantee. This guarantee is valid for 90 days from time of purchase. If you experience problems with this product please contact 1-308-832-2070. If you need parts for this item you may also contact 1-308-832-2070 for very competitively priced parts for all of Cummins Tools needs.

EXPLODED DIAGRAM & PART LIST



EXPLODED DIAGRAM & PART LIST

REF #	CUMMINS PART #	DESCRIPTION	QTY	REF #	CUMMINS PART #	DESCRIPTION	QTY
1	6225001	FUEL METER	1				
2	6225002	FUEL TANK	1	33	6225033	ROTOR ASSYMBLY	1
3	6225003	FUEL TANK FILTER FILTRE DU	1				
4	6225004	HEXAGON FLANGE BELT	4	34	6225034	STATOR ASSYMBLY	1
5	6225005	GASKET 6	4	35	6225035	MAGNETO WIRE PROTECT COVER	1
6	6225006	SCREW GASKET	4	36	6225036	REAR COVER	1
7	6225007	ANTI-VIRBRATION GASKET	4	37	6225037	RECTIFIER	1
8	6225008	FUEL TANK	1	38	6225038	GASKET	4
9	6225009	FUEL SWITCH	1	39	6225039	SPRING GASKET	4
10	6225010	FUEL PIPE HOOP	2	40	6225040	FLANGE BOLT	4
11	6225011	OIL PIPE	1	41	6225041	GASKET	1
12	6225012	BOLT	2	42	6225042	SPRING GASKET	1
13	6225013	AIR FILTER CAP	1	43	6225043	HEXAGON FLANGE BELT	1
14	6225014	FOAM FILTER	1	44	6225044	MAGNETO COVER	1
15	6225015	AIL FILTER CLAPBOARD	1	45	6225045	GASKET	2
16	6225016	FLANGE LOCKED NUT	6	46	6225046	SPRING GASKET	2
17	6225017	AIR FILTER BASE	1	47	6225047	BOLT	2
18	6225018	SUCTION PIPE SEALED	1	48	6225048	FLANGE LOCKED NUT M8	6
19	6225019	CARBURETOR	1	49	6225049	GASKET	8
20	6225020	SUCTION PIPE	1	50	6225050	SPRING GASKET	8
21	6225021	DOUBLE END BELT	2	51	6225051	HEXAGON FLANGE BELT	8
22	6225022	ENGINE	1	52	6225052	CUSHION	2
23	6225023	EXHAUST PIPE GASKET	1	53	6225053	FRAME	1
24	6225024	EXHAUST PIPE	1	54	6225054	ANTI-VIRBRATION FEET	4
25	6225025	FLANGE LOCKED NUT	2	55	6225055	FLEX TUBE	1
26	6225026	HEXAGON FLANGE BELT	2	56	6225056	APPLIANCE BOX	1
27	6225027	MUFFLER GASKET	1	57	6225057	HEXAGON FLANGE BELT	2
28	6225028	MUFFLER	1	58	6225058	CAPACITOR	1
29	6225029	HEXAGON FLANGE BELT	1	59	6225059	BOLT BOULON	1
30	6225030	FRONT COVER	1	60	6225060	PANEL	1
31	6225031	FASTEN GASKET	4	61	6225061	BOLT	4
32	6225032	HEXAGON FLANGE BELT M8 X 20 MM	4	62	6225062	ENGINE SWITCH	1
				63	6225063	AC CIRCUIT PROTECTOR	1
				64	6225064	AC SOCKET	2
				65	6225065	OIL LAMP	1
				66	6225066	PILOTLAMP	1