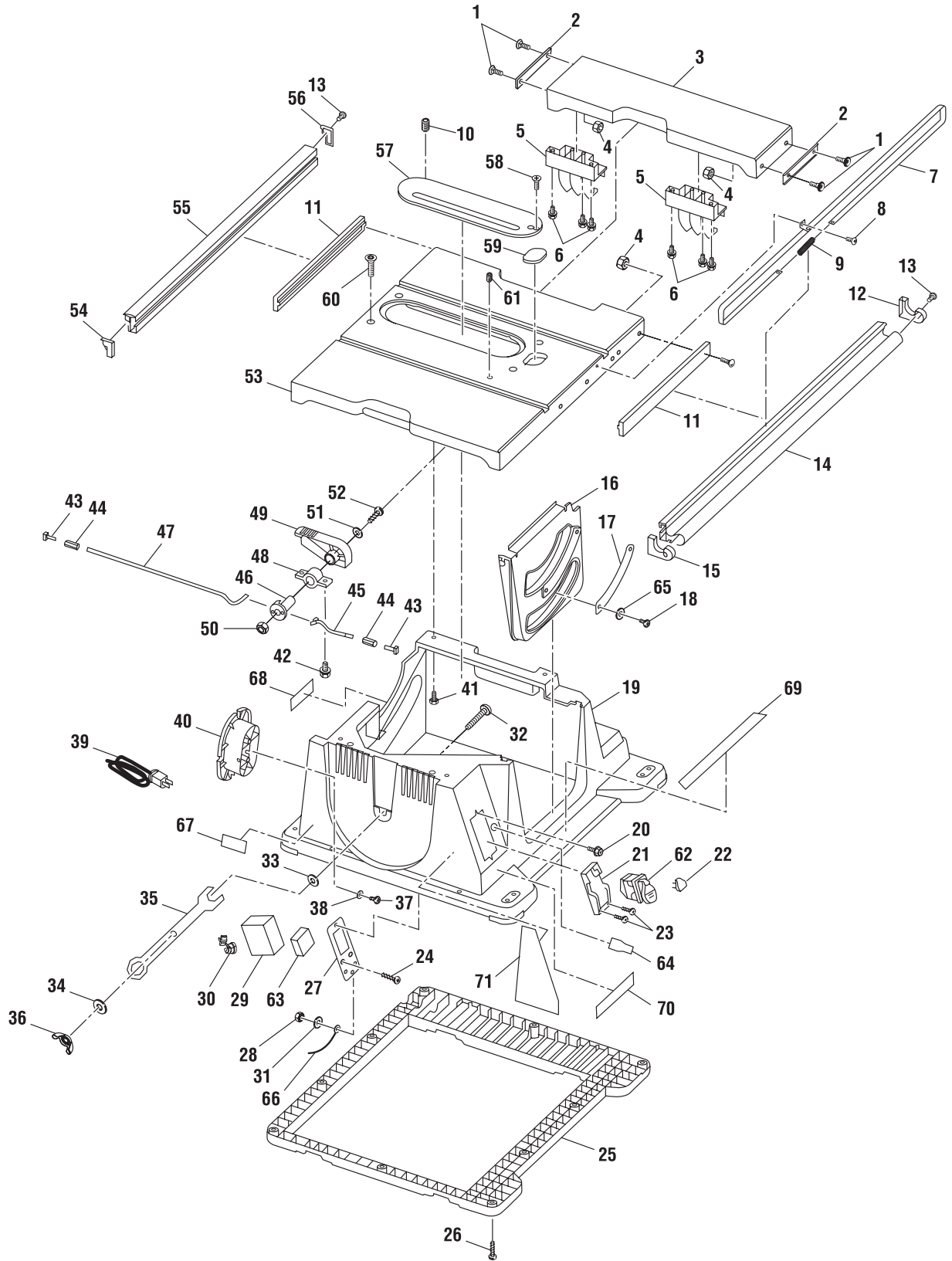


RIDGID
10 in. TABLE SAW
MODEL NO. TS2400LS
REPAIR SHEET

FIGURE A



NOTE: The assembly shown represents an important part of the double insulated system. To avoid the possibility of alteration or damage to the system, service should be performed by your nearest Ryobi Authorized Service Center. For the service center nearest you call 1-800-525-2579.

RIDGID 10 in. TABLE SAW – MODEL NUMBER TS2400LS

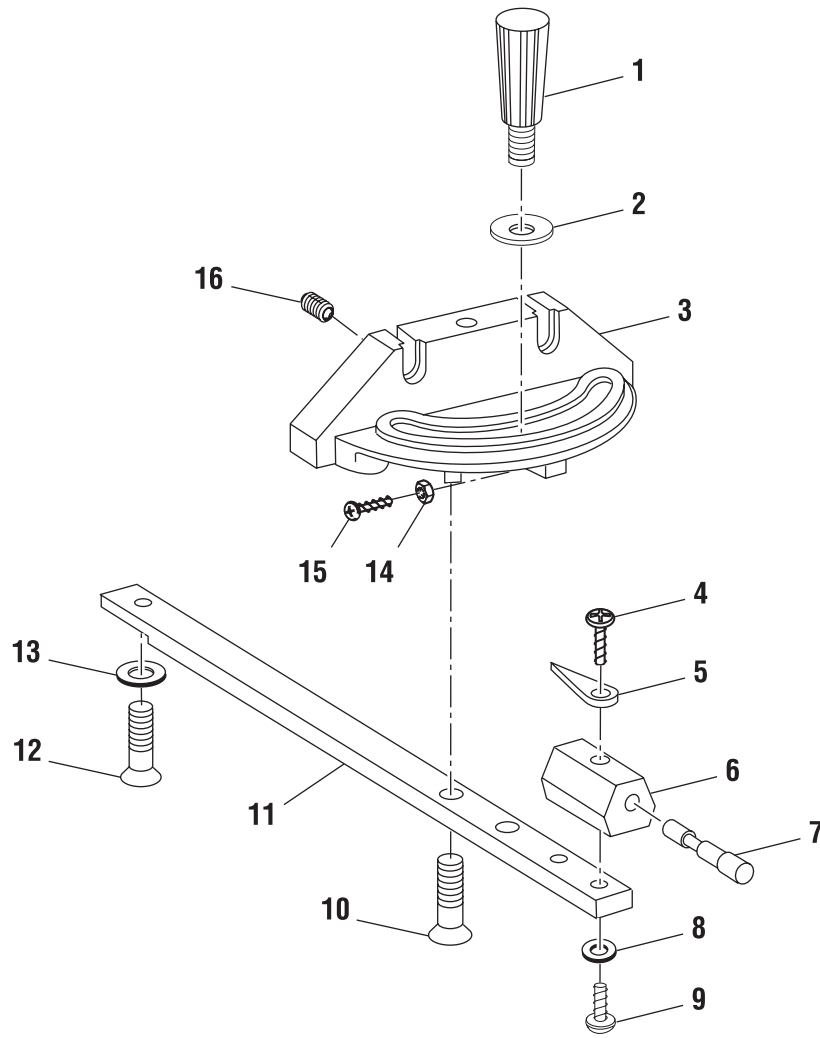
The model number will be found on a plate attached to the motor housing. Always mention the model number in all correspondence regarding your **TABLE SAW** or when ordering repair parts.

PARTS LIST FOR FIGURE A

Key Part No. Number	Description	Qty.	Key Part No. Number	Description	Qty.
1	126317	12	39	830405	1
2	827518	2	40	830406	1
3	827545	1	41	274622	4
4	73352	12	42	821521	2
5	827478	2	43	827463	2
6	159572-146	6	44	827482	2
7	830397	1	45	827515	1
8	809813-1	1	46	827523	1
9	827872	1	47	827515-1	1
10	104879	4	48	830377	1
11	827533	2	49	827514	1
12	830345	1	50	274205	1
13	448013	6	51	805552	1
14	830378	1	52	813051-5	1
15	830396	1	53	830376	1
16	827497	1	54	827645	1
17	827870	1	55	827525	1
18	808380-2	2	56	827470	1
19	829971-8	1	57	TH100050	1
20	9420474	2	58	809374	4
21	826395	1	59	826390	1
22	AC1000	1	60	805297-12	4
23	808380-18	1	61	138671	2
24	808275-4	1	62	826347	1
25	827493	1	63	829971-7	1
26	808380-5	10	64	829971-6	1
27	830399	1	65	805549-22	2
28	805475	2	66	0131011101	1
29	830398	1	67	864501003	1
30	169123-2	1	68	871054000	1
31	138164	2	69	864501008	1
32	827925	1	70	864501001	1
33	827873	1	71	864501002	1
34	827921	2	72	AC9930	1
35	827548	2			
36	827874	1			
37	808380-17	3			
38	805550-5	2			

* Standard Hardware Item – May Be Purchased Locally

FIGURE B



RIDGID 10 in. TABLE SAW – MODEL NUMBER TS2400LS

The model number will be found on a plate attached to the motor housing. Always mention the model number in all correspondence regarding your **TABLE SAW** or when ordering repair parts.

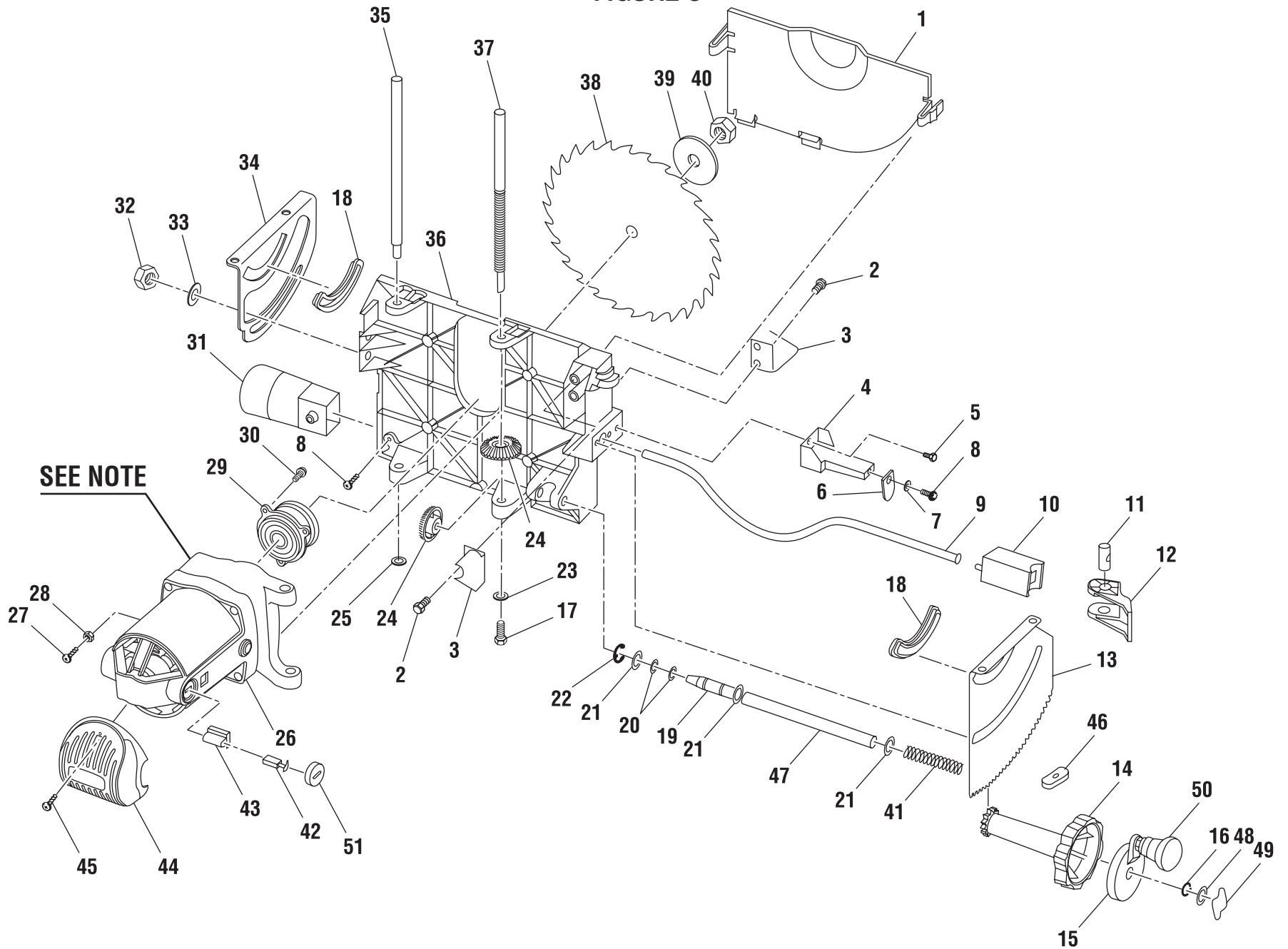
PARTS LIST FOR FIGURE B

Key No.	Part Number	Description	Qty.
	830338	MITER GAUGE ASSEMBLY.....	1
1	826506-1	KNOB.....	1
2	821063-5	* WASHER (8 mm X 23 mm X 2 mm).....	1
3	826663	GAUGE MITER	1
4	824723-1	* SCREW (8/32 in. X 5/16 in. Pan Hd.).....	2
5	123069-1	INDICATOR.....	1
6	830351	MITER GAUGE INDICATOR BLOCK	1
7	830352	MITER INDEX PIN.....	1
8	140755-15	* LOCK WASHER (#8).....	2
9	824723	* SCREW (8-32 X 5/8 in. Pan Hd.)	2
10	818470-4	* SCREW (M6 X 1.0-20 mm Flat Hd.)	1
11	830350	MITER GAUGE ROD.....	1
12	830354	* SCREW (M6 X 9 mm Flat Hd.).....	1
13	830353	T-SLOT WASHER	1
14	134530	* HEX NUT (6-32)	3
15	809813-4	* SCREW (6-32 X 5/8 in. Pan Hd.)	3
16	818471-6	* SET SCREW (M5 X .08-5 mm Socket)	1

* Standard Hardware Item – May Be Purchased Locally

RIDGID 10 in. TABLE SAW - MODEL NUMBER TS2400LS

FIGURE C



RIDGID 10 in. TABLE SAW – MODEL NUMBER TS2400LS

The model number will be found on a plate attached to the motor housing. Always mention the model number in all correspondence regarding your **TABLE SAW** or when ordering repair parts.

PARTS LIST FOR FIGURE C

Key No.	Part Number	Description	Qty.	Key No.	Part Number	Description	Qty.
1	827483	BLADE COVER.....	1	27	827863	* SET SCREW (M5 x 0.8 x 20L)	1
2	370625	* SCREW (1/4-20 X 1/2 in. Hex Hd. Washer).....	2	28	827864	* HEX NUT (M5 x 0.8P)	1
3	827619	BEVEL STOP PLATE	1	29	830412	ARBOR ASSEMBLY	1
4	827540	BEVEL SUPPORT INDICATOR.....	1	30	9420474	* SCREW (M5 x 0.8 x 15 + S-Washer).....	3
5	141594-46	* SCREW (1/4-20 X 5/8 in. Socket Cap).....	1	31	827476	DUST GUIDE.....	1
6	824334-1	INDICATOR.....	1	32	60249	LOCK NUT (3/8-16).....	1
7	805550-5	* WASHER (7/32 in. X 5/8 in. X 1/16 in.).....	2	33	60014	* WASHER (.380 in. X 47/64 in. X 3/32 in.)	1
8	808380-17	* SCREW (10-14 x 3/4 in.)	2	34	827520	REAR MOUNT	1
9	827459	LOCKING BAR	1	35	827531	GUIDE SHAFT	1
10	827862	BEVEL CLAMP ASSEMBLY	1	36	830380	CRADLE	1
11	827522	BEVEL PIVOT LOCK	1	37	827529	ELEVATION SHAFT	1
12	827500	BEVEL HANDLE LOCK	1	38	830394	* BLADE (10 in./28T Carbide)	1
13	827519	FRONT MOUNT	1	39	827465	BLADE COLLAR.....	1
14	830390	BEVEL KNOB ASSEMBLY	1	40	6362	ARBOR NUT.....	1
15	830391	ELEVATION HANDLE ASSEMBLY.....	1	41	830386	SPRING	1
16	37937	* WASHER (17/64 in. X 5/8 in. X 1/32 in.).....	1	42	816768	BRUSH	2
17	809372-7	* SCREW (10-32 X 5/8 in. Pan Hd.).....	1	43	826017	BRUSH HOLDER ASSEMBLY	2
18	827467	TRUNNION BUSHING	2	44	828064	REAR MOTOR COVER	1
19	829971-9	ELEVATION CRANK SHAFT W/O RINGS.....	1	45	828122-1	* SCREW (M4 X 16-10 in. Pan Hd.)	2
20	821421-11	* O-RING (3/8 in. X 1/16 in.).....	2	46	809398	WELD NUT	4
21	805561-4	* WASHER (0.505 in. X 13/16 in. X 1/32 in.)	1	47	830385	ELEVATION LOCK SPACER	1
22	805641-4	* RETAINING RING (E10)	1	48	60415	SPRING WASHER.....	1
23	60136	* WASHER (13/64 in. X 5/8 in. X 1/32 in.).....	1	49	830393	ELEVATION LOCK SPACER.....	1
24	827496	ELEVATION GEAR.....	1	50	830392	SWIVEL KNOB	1
25	802612-8	* PUSH NUT (3/8 in.)	1	51	830250	BRUSH COVER.....	2
26	830381	MOTOR ASSEMBLY.....	1				

WARNING: Improper repair of a double insulated tool can result in damage to the double insulation system possibly causing electrical shock or electrocution. Any repairs requiring disassembly of your tool requires safety testing and should only be performed by a Ryobi Authorized Service Center. For the service center nearest you call 1-800-525-2579.

* Standard Hardware Item – May Be Purchased Locally

RIDGID 10 in. TABLE SAW - MODEL NUMBER TS2400LS

FIGURE E

