



Assembly & Instruction Manual

MARINE TRAILER WINCH 1,200 LBS. CAPACITY

Model 5206



Distributed Exclusively By

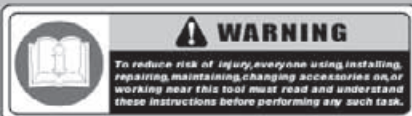


THANK YOU FOR BUYING CUMMINS INDUSTRIAL TOOLS
Your new Marine Trailer Winch has been engineered and manufactured to Cummins tools high standards for dependability, ease of operation, and operator safety. properly cared for, it will give you years of rugged, trouble-free performance

CAUTION: Carefully read through this entire operator's manual before using your new machine

Pay close attention to the Rules for Safe Operation, Warnings, and Cautions. If you use your machine properly and only for what it is intended, you will enjoy years of safe, reliable service.

SAVE THIS MANUAL FOR FUTURE REFERENCE



Customer Service Postal Address:
1290 35 Road
Minden, NE 68959
voice: 1-(308) 832-2070
fax: 1-(308) 832-2069

*You can purchase additional
items at www.cumminstools.com*

Safety Warnings and Precautions

WARNING: When using tool, basic safety precautions should always be followed to reduce the risk of personal injury and damage to equipment.

Read all instructions before using this tool!

1. **Keep work area clean.** Cluttered areas invite injuries.
2. **Observe work area conditions.** Do not use machines or power tools in damp or wet locations. Don't expose to rain. Keep work area well lighted.
3. **Keep children away.** Children must never be allowed in the work area. Do not let them handle machines, tools, or extension cords.
4. **Store idle equipment.** When not in use, tools must be stored in a dry location to inhibit rust. Always lock up tools and keep out of reach of children.
5. **Use the right tool for the job.** Do not attempt to force a small tool or attachment to do the work of a larger industrial tool. There are certain applications for which this tool was designed. It will do the job better and more safely at the rate for which it was intended. Do not modify this tool and do not use this tool for a purpose for which it was not intended.
6. **Dress properly.** Do not wear loose clothing or jewelry as they can be caught in moving parts. Protective, electrically non-conductive clothes and non-skid footwear are recommended when working. Wear restrictive hair covering to contain long hair.
7. **Use eye protection.** Always wear ANSI approved impact safety glasses underneath a full face shield during use. Also, wear heavy duty work gloves.
8. **Do not overreach.** Keep proper footing and balance at all times. Do not reach over or across running machines.
9. **Maintain tools with care.** Keep tools sharp and clean for better and safer performance. Follow instructions for lubricating and changing accessories. The handles must be kept clean, dry, and free from oil and grease at all times.
10. **Remove adjusting keys and wrenches.** Check that keys and adjusting wrenches are removed from the tool or machine work surface before starting work.
11. **Stay alert.** Watch what you are doing, use common sense. Do not operate any tool when you are tired.
12. **Check for damaged parts.** Before using any tool, any part that appears damaged should be carefully checked to determine that it will operate properly and perform its intended function. Any part that is damaged should be replaced.
13. **Replacement parts and accessories.** When servicing, use only identical replacement parts. Use of any other parts will void the warranty. Only use accessories intended for use with this tool. Approved accessories are available from Cummins Industrial Tools.
14. **Do not operate tool if under the influence of alcohol or drugs.** Read warning labels on prescriptions to determine if your judgment or reflexes are impaired while taking drugs. If there is any doubt, do not operate the tool.

Warning: The warnings, cautions, and instructions discussed in this instruction manual cannot cover all possible conditions and situations that may occur. It must be understood by the operator that common sense and caution are factors which cannot be built into this product, but must be supplied by the operator.

PRODUCT SPECIFICATIONS

Item	Description
Maximum Pulling Capacity	1,200 Pounds (under normal conditions)
Winch Type	Two Way Ratchet
Construction	Heavy Duty Gauge Steel w/Zinc Plating
Nylon Strap Dimensions	20' Long x 2" Wide
Hook Construction	Drop Forged Steel w/Spring Loaded Safety Clip
Gear Ratio	4.1:1
Mounting Holes	3/8" O.D. (Qty. 3)
Main Gear Dimensions	3-3/8" O.D x 1/4" Thick
Overall Dimensions	7-1/4" Long x 5" Wide x 5-7/8" High
Weight	7.70 Pounds

SAVE THIS MANUAL

You will need this manual for the safety warnings and precautions, assembly, operating, inspection, maintenance and cleaning procedures, parts list and assembly diagram. Keep your invoice with this manual. Write the invoice number on the inside of the front cover. Keep this manual and invoice in a safe and dry place for future reference.

GENERAL SAFETY WARNINGS AND PRECAUTIONS

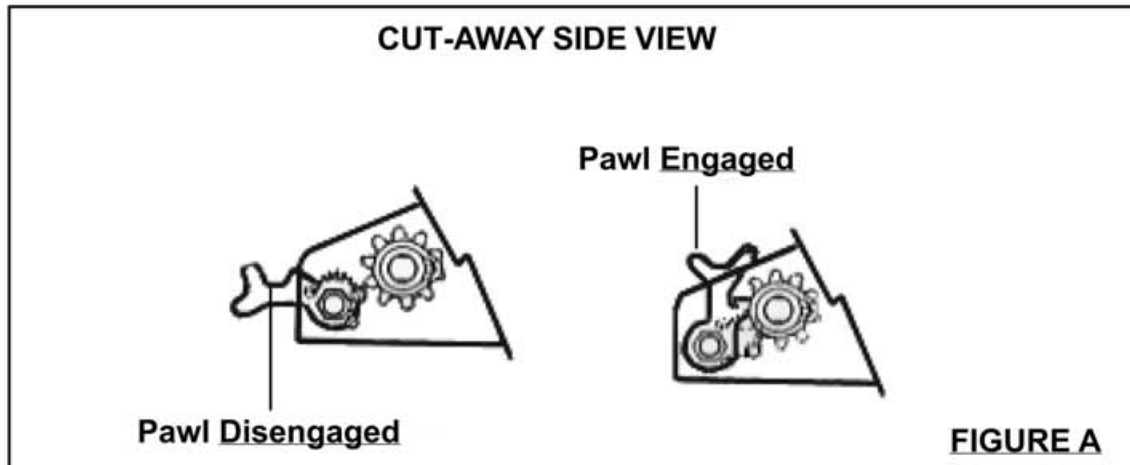
1. **KEEP WORK AREA CLEAN AND DRY.** Cluttered, damp, or wet work areas invite injuries.
2. **KEEP CHILDREN AWAY FROM WORK AREA.** Do not allow children to handle this product.
3. **STORE IDLE EQUIPMENT.** When not in use, tools and equipment should be stored in a dry location to inhibit rust. Always lock up tools and equipment, and keep out of reach of children.
4. **DO NOT USE THIS PRODUCT IF UNDER THE INFLUENCE OF ALCOHOL OR DRUGS.** Read warning labels on prescriptions to determine if your judgement or reflexes are impaired while taking drugs. If there is any doubt, do not attempt to use this product.
5. **USE EYE PROTECTION.** Wear ANSI approved safety impact eye goggles when setting up this product. ANSI approved safety impact eye goggles are available from Cummins Industrial Tools.

6. **DRESS SAFELY.** Do not wear loose clothing or jewelry, as they can become caught in moving parts. Wear a protective hair covering to prevent long hair from becoming caught in moving parts. If wearing a long-sleeve shirt, roll sleeves up above elbows.
7. **DO NOT OVERREACH.** Keep proper footing and balance at all times to prevent tripping, falling, back injury, etceteras.
8. **INDUSTRIAL APPLICATIONS MUST FOLLOW OSHA REQUIREMENTS.**
9. **STAY ALERT.** Watch what you are doing at all times. Use common sense. Do not use this product when you are tired or distracted from the job at hand.
10. **CHECK FOR DAMAGED PARTS.** Before using this product, carefully check that it will operate properly and perform its intended function. Check for damaged parts and any other conditions that may affect the operation of this product. Replace or repair damaged or worn parts immediately.
11. **REPLACEMENT PARTS AND ACCESSORIES:** When servicing, use only identical replacement parts. Only use accessories intended for use with this product. Approved accessories are available from Cummins Industrial Tools.
12. **MAINTAIN THIS PRODUCT WITH CARE.** Keep this product clean and dry for better and safer performance.
13. **MAINTENANCE:** For your safety, service and maintenance should be performed regularly by a qualified technician.
14. **USE THE RIGHT TOOL FOR THE JOB.** Do not attempt to force a small tool or attachment to do the work of a larger industrial tool. There are certain applications for which this tool was designed. It will do the job better and more safely at the rate for which it was intended. Do not modify this tool, and do not use this tool for a purpose for which it was not intended.
15. **WARNING:** The warnings, precautions, and instructions discussed in this manual cannot cover all possible conditions and situations that may occur. The operator must understand that common sense and caution are factors, which cannot be built into this product, but must be supplied by the operator.

SPECIFIC PRODUCT WARNINGS AND PRECAUTIONS

1. **DO NOT EXCEED THE MAXIMUM RATED PULLING CAPACITY (1,200 LBS.) FOR THE WINCH.** Overloading the Winch could cause personal injury and/or property damage.

2. **MAKE SURE TO READ AND UNDERSTAND ALL INSTRUCTIONS AND SAFETY PRECAUTIONS AS OUTLINED IN THE MANUFACTURER'S MANUAL FOR THE TRAILER TO WHICH THE WINCH WILL BE ATTACHED.**
3. **MAKE SURE TO READ AND UNDERSTAND ALL INSTRUCTIONS AND SAFETY PRECAUTIONS AS OUTLINED IN THE MANUFACTURER'S MANUAL FOR THE BOAT YOU WILL WINCH.** Make sure to attach the Strap (part #13) of the Winch to the boat manufacturer's recommended pulling point.
4. **ALWAYS EXAMINE THE WINCH FOR STRUCTURAL CRACKS, BENDS, DAMAGE, FRAYED OR TORN STRAP, AND ANY OTHER CONDITIONS THAT MAY AFFECT THE SAFE OPERATION OF THE WINCH.** Note: Strap exposure to sunlight and heat sources may adversely affect the durability of the strap over time. Do not use the Winch even if minor damage appears.
5. **MAINTAIN A SAFE WORKING ENVIRONMENT.** Keep the work area well lit. Make sure there is adequate surrounding workspace. Always keep the work area free of obstructions, grease, oil, trash, and other debris.
6. **ALWAYS KEEP HANDS AND FINGERS AWAY FROM THE GEARS OF THE WINCH WHEN APPLYING OR RELEASING A LOAD.** Remain clear of the Strap (part #13) when pulling a load. Do not stand in line with the Strap, as it could whip violently should it break. People and animals should be kept at a safe distance when using the Winch.
7. **USE EXTREME CAUTION WHEN APPLYING OR RELEASING A LOAD.** Never allow the load to suddenly release. Slowly and carefully apply and release the load.
8. **NEVER WINCH A BOAT WITH ANYONE IN IT.**
9. **PRIOR TO USING THE WINCH, MAKE SURE THE PAWL (part #16) IS ENGAGED.** Never let go of the Handle (part #9) until the Pawl is fully engaged and supporting the load. If not, the Handle can spin dangerously backwards which can result in serious personal injury and/or property damage. **(See Figure A, next page.)**
10. **THE WINCH IS DESIGNED FOR MOUNTING ON SQUARE OR RECTANGULAR SURFACES ONLY.** Do not attempt to mount the Winch on a rounded surface.
11. **IF THE WINCH CANNOT BE CRANKED WITH ONE HAND, THE WINCH IS PROBABLY BEING OVERLOADED.**



12. **THE WINCH IS NOT DESIGNED TO ACCOMMODATE ROPE OR STEEL CABLE.**
13. **THE STRAP/HOOK MUST BE PULLED STRAIGHT IN.** Keep the load in line with the Winch. Pulling at an angle (off to the side) may cause excessive stress on the Winch.
14. **DO NOT LEAVE THE WINCH UNATTENDED WHILE IT IS UNDER A LOAD.** Failure of the Winch or strap could result in personal injury or property damage. Only those people familiar with the safe operations of the Winch should be monitoring the Winch while it is under load.

UNPACKING

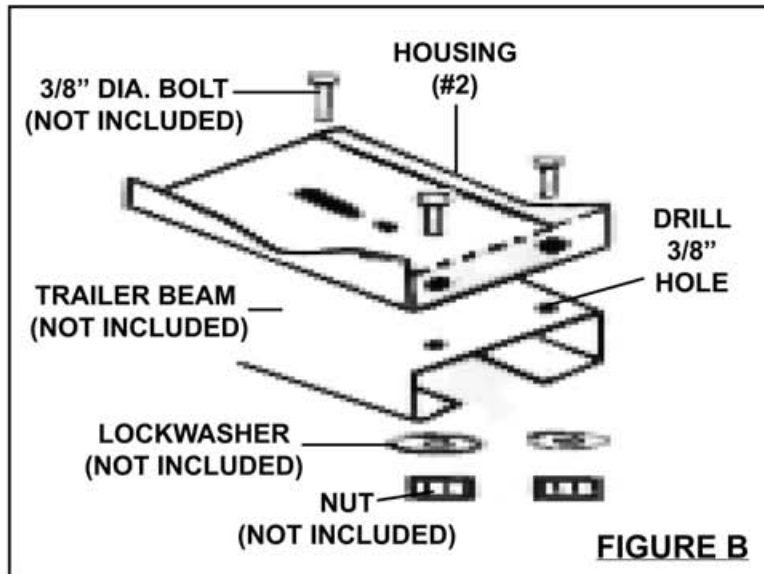
When unpacking, check to make sure all the parts shown on the **Parts List (page 9)** are included. If any parts are missing or broken, please call Cummins Industrial Tools at the number shown on the cover of this manual as soon as possible.

ASSEMBLY INSTRUCTIONS

NOTE: For additional references to the parts listed below, refer to the **Assembly Diagram (page 9)**.

To Mount The Winch On A Trailer Tongue:

1. Place the Housing (part #2) on the top edge of the trailer beam, and use the three mounting holes on the Housing as a template by which to mark three holes to be drilled through the trailer beam. **(See Figure B, next page.)**
2. Temporarily remove the Housing (part #2) from the trailer beam, and where previously marked drill three **3/8"** holes through the trailer beam. When drilling, make sure no electrical cables or wires are in the drilling path. **(See Figure B.)**



3. Insert three 3/8" Bolts (not included) of appropriate length downward through the three mounting holes in the Housing (part #2) and through the three pre-drilled mounting holes in the trailer beam. Then use three Lockwashers (not included) and three Nuts (not included) to secure the Winch to the trailer beam. (See Figure B.)

OPERATING INSTRUCTIONS

1. **CAUTION!** Prior to operating the Winch, make sure to read and understand all of the instructions listed in the section "*Specific Warnings and Precautions*" of this manual.
2. **To load a boat onto a trailer**, disengage the Pawl (part #16), located at the rear of the Winch, by pulling the Pawl *backward* to its horizontal position. (See Figure A.)
3. Pull out the length of Strap (part #13) needed to attach the Strap's *Hook* to the boat being winched. **NOTE: Always leave at least four turns of Strap on the Reel (part #3) to prevent pulling the Strap completely out of the Winch.** (See Figure C, next page.)
4. Attach the Hook securely to the boat.
5. Engage the Pawl (part #16) by pushing it *forward* to its vertical position. (See Figure C.)
6. Turn the Handle Assembly (part #9) clockwise to pull the boat onto the trailer. Continue turning the Handle Assembly clockwise until the boat is loaded fully

onto the trailer and can be safely secured to the trailer. (See Figure C.)

7. **To unload a boat from a trailer**, firmly grip and hold the Handle Assembly (part #9) while another person disengages the Pawl (part #16). Then, slowly turn the Handle Assembly counterclockwise until the boat has been completely unloaded from the trailer. (See Figure C.)
8. Remove the Strap's Hook (part #13) from the boat.
9. Engage the Pawl (part #16), and turn the Handle Assembly (part #9) clockwise until the entire length of the Strap (part #13) has been recoiled into the Handle Assembly. (See Figure C.)

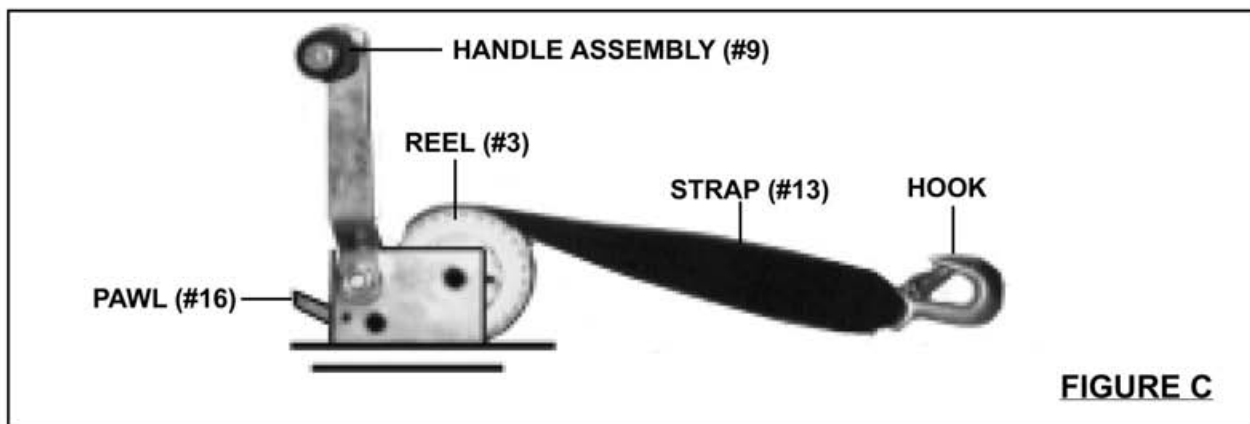


FIGURE C

INSPECTION, MAINTENANCE, AND CLEANING

1. **CAUTION: Always secure the load and then always release a load from the Winch before performing any inspection, maintenance, or cleaning.**
2. **BEFORE EACH USE**, inspect the general condition of the Winch. Check for loose screws, misalignment or binding of moving parts, cracked, bent or broken parts, frayed or torn Strap, and any other condition that may affect its safe operation. Inspect the entire unit for corrosion that may be caused by exposure to salt water or weather. If abnormal noise or vibration occurs, have the problem corrected before further use. **Do not use damaged equipment.**
3. **THE GEARS OF THE WINCH SHOULD BE GREASED AT ALL TIMES.**
4. **PERIODICALLY, APPLY AN OIL LUBRICANT TO THE PAWL MECHANISM.** The Pawl mechanism must be free of dirt, paint, rust, etc., as these conditions will prevent the Pawl mechanism from operating properly. (See Figure A.)

5. **IF THE WINCH HAS BEEN USED IN SALT WATER**, rinse the entire unit thoroughly with fresh water. Then, use a premium quality, lightweight oil to lubricate all moving parts.
6. **KEEP ALL PARTS LIGHTLY LUBRICATED TO PREVENT CORROSION.** If corrosion develops, you may prep and paint *exterior* parts of the Winch to arrest and prevent further damage.

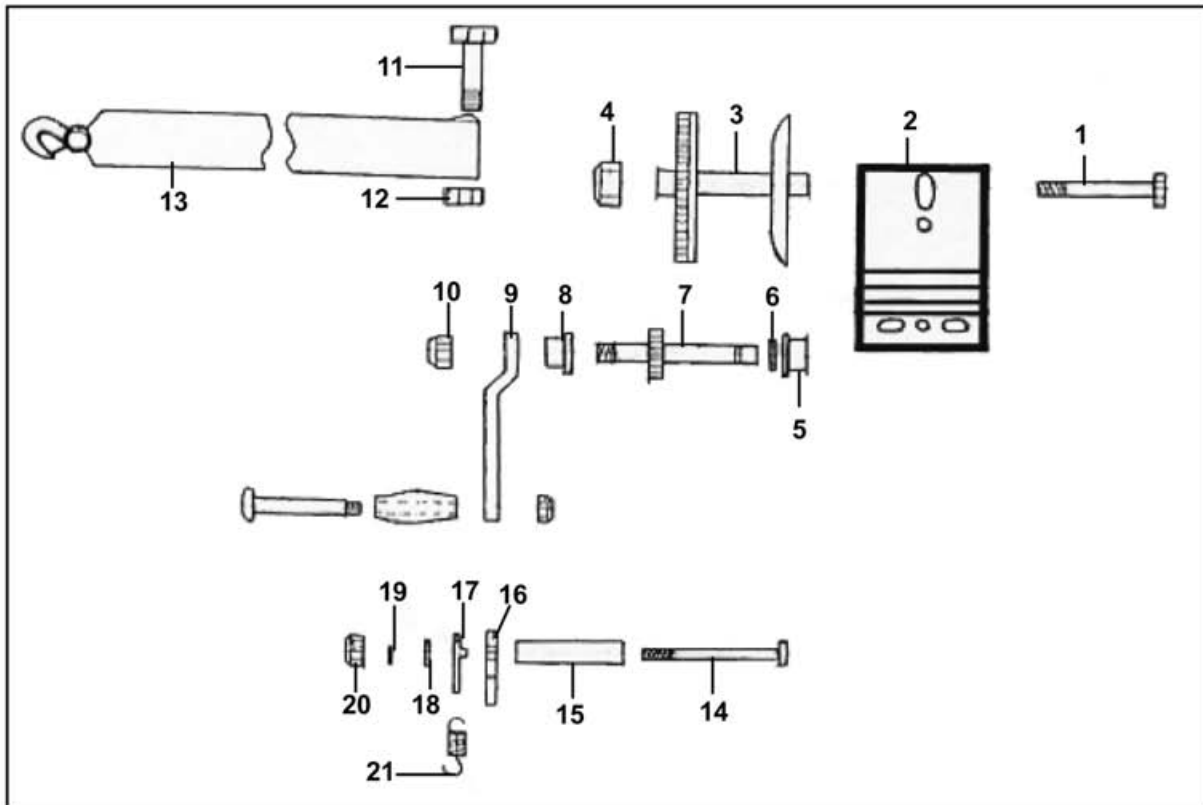
PLEASE READ THE FOLLOWING CAREFULLY

THE MANUFACTURER AND/OR DISTRIBUTOR HAS PROVIDED THE PARTS LIST AND ASSEMBLY DIAGRAM IN THIS MANUAL AS A REFERENCE TOOL ONLY. NEITHER THE MANUFACTURER OR DISTRIBUTOR MAKES ANY REPRESENTATION OR WARRANTY OF ANY KIND TO THE BUYER THAT HE OR SHE IS QUALIFIED TO MAKE ANY REPAIRS TO THE PRODUCT, OR THAT HE OR SHE IS QUALIFIED TO REPLACE ANY PARTS OF THE PRODUCT. IN FACT, THE MANUFACTURER AND/OR DISTRIBUTOR EXPRESSLY STATES THAT ALL REPAIRS AND PARTS REPLACEMENTS SHOULD BE UNDERTAKEN BY CERTIFIED AND LICENSED TECHNICIANS, AND NOT BY THE BUYER. THE BUYER ASSUMES ALL RISK AND LIABILITY ARISING OUT OF HIS OR HER REPAIRS TO THE ORIGINAL PRODUCT OR REPLACEMENT PARTS THERETO, OR ARISING OUT OF HIS OR HER INSTALLATION OF REPLACEMENT PARTS THERETO.

PARTS LIST

Part #	Description	Qty.	Part #	Description	Qty.
1	Shaft	1	12	Lock Nut	1
2	Housing	1	13	Strap	1
3	Reel	1	14	Bolt	1
4	Lock Nut	1	15	Bushing	1
5	Bushing	1	16	Pawl	1
6	Retaining Ring	1	17	Holder	1
7	Shaft	1	18	Washer	1
8	Bushing	1	19	Washer	1
9	Handle Assy.	1	20	Lock Nut	1
10	Lock Nut	1	21	Spring	1
11	Bolt	1			

ASSEMBLY DIAGRAM



NOTE: Some parts are listed and shown for illustration purposes only, and are not available individually as replacement parts.