



# Assembly & Instruction Manual

**ITEM 3436**

VENDOR: A | SERIES: 1



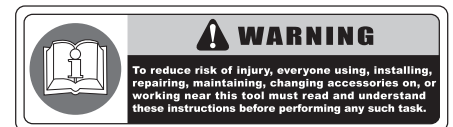
# 20 TON HYDRAULIC SHOP PRESS

THANK YOU FOR BUYING CUMMINS INDUSTRIAL TOOLS  
You can purchase additional items at  
[www.cumminstools.com](http://www.cumminstools.com)

**SAVE THIS MANUAL FOR FUTURE REFERENCE**



Customer Service Postal Address:  
1290 35 Road  
Minden, NE 68959  
Voice: 1-(308) 832-2070  
Fax: 1-(308) 832-2069



Your new 20 Ton Hydraulic Shop Press has been engineered and manufactured to Cummins Industrial Tools high standards for dependability, ease of operation, and operator safety. Pay close attention to the Rules for Safe Operation, Warnings, and Cautions. If you use your machine properly and only for what it is intended, you will enjoy years of safe, reliable service.

# SAFETY WARNINGS AND PRECAUTIONS

**WARNING:** When using tool, basic safety precautions should always be followed to reduce the risk of personal injury and damage to equipment. Read all instructions before using the tool!

- **Work area conditions.** Cluttered areas invite injuries.
- **Additional work area conditions.** Do not use machines or power tools in damp or wet locations. Do not expose to rain. Keep work area well lighted.
- **Keep children away.** Children must never be allowed in the work area. Do not let them handle machines, tools or extension cords.
- **Store idle equipment.** When not in use, tools must be stored in a dry location to inhibit rust. Always lock up tools and keep out of reach of children.
- **Use the right tool for the job.** Do not attempt to force a small tool or attachment to do the work of a larger industrial tool. There are certain applications for which this tool was designed. It will do the job better and more safely at the rate for which it was intended. Do not modify this tool and do not use this tool for a purpose for which it was not intended.
- **Dress properly.** Do not wear loose clothing or jewelry as they can be caught in moving parts. Protective, electrically non-conductive clothes and non-skid footwear are recommended when working. Wear restrictive hair covering to contain long hair.
- **Use eye protection.** Always wear ANSI approved impact safety glasses underneath a full face shield during use. Also, wear heavy duty work gloves.
- **Do not overreach.** Keep proper footing and balance at all times. Do not reach over or across running machines.
- **Maintain tools with care.** Keep tools sharp and clean for better and safer performance. Follow instructions for lubricating and changing accessories. The handles must be kept clean, dry, and free from oil and grease at all times.
- **Remove adjusting keys and wrenches.** Check that keys and adjusting wrenches are removed from the tool or machine work surface before starting work.
- **Stay alert.** Watch what you are doing, use common sense. Do not operate any tool when you are tired.
- **Check for damaged parts.** Before using any tool, any part that appears damaged should be carefully checked to determine that it will operate properly and perform its intended function. Any part that is damaged should be replaced.
- **Replacement parts and accessories.** When servicing, use only identical replacement parts. Use of any other parts will void the warranty. Only use accessories intended for use with this tool. Approved accessories are available from Cummins Industrial Tools.
- **Do not operate tools if under the influence of alcohol or drugs.** Read warning labels on prescriptions to determine if your judgment or reflexes are impaired while taking drugs. If there is any doubt, do not operate the tool.

**WARNING:** The warnings, cautions, and instructions discussed in this instruction manual can not cover all possible conditions and situations that may occur. It must be understood by the operator that common sense and caution are factors which can not be built into this product, but must be supplied by the operator.

# SPECIFIC PRODUCT WARNINGS AND PRECAUTIONS

## Specifications

■ <b>Maximum Capacity</b>	20 Tons
■ <b>Compressed PSI</b>	69 pa. (10000 PSI)
■ <b>Overall Dimensions</b>	69-1/2" H x 27-1/2" D x 30-1/2" W
■ <b>Rail Width</b>	3-1/2"
■ <b>Pressure Gauge Markings</b>	0 - 20 Tons
■ <b>Pressure Gauge Thread</b>	1/2" NPT
■ <b>Piston Rod Diameter</b>	Ø48
■ <b>Piston Rod Travel</b>	5-1/2"
■ <b>Weight</b>	257 lbs.

## Specific Warnings and Precautions

- **WARNING:** If you detect anything that may indicate imminent structural failure to the Shop Press, discontinue using it immediately. Disconnect the Shop Press from its compressed air supply source, and have the problem corrected before further use.
- **DO NOT INSTALL THIS EQUIPMENT ON ANY ASPHALT OR WOOD SURFACE.** Make sure the Shop Press is firmly secured to dry, oil / grease free, flat, level concret surface capable of supporting the weight of the Shop Press, the Shop Press on expansion seams or on cracked ,defective concrete.
- **MAINTAIN A SAFE WORKING ENVIRONMENT.** Do not use the Shop Press in or near any damp or wet areas. Do not expose this tool to rain. Keep the working area well lit. Make sure there is adequate surrounding workspace. Use this tool in a well ventilated area. Do not operate this tool in the presence of flammable liquids, gases, or dust.
- **MAKE SURE TO READ AND UNDERSTAND ALL INSTRUCTIONS AND SAFETY PRECAUTIONS AS OUTLINED IN THE MANUFACTURER'S MANUAL.** For the workpiece you are pressing, always use the manufacture's recommended pressing points, minimum / maximum pressing force required, etcetera, for the work piece you are pressing.
- **DO NOT EXCEED THE RECOMMENDED MAXIMUM PSI AND PRESSING CAPACITY.** This Shop Press will do the work better and safer at the speed and capacity for which it was designed. Do not exceed the maximum 1000 PSI compressed supply, or the 20 ton press capacity.
- **PRIOR TO USING THE SHOP PRESS, REMOVE ALL ADJUSTING WRENCHES.**
- **AVOID UNINTENTIONAL STARTING.** Make sure you are prepared to begin work before squeezing the Air Valve Handle).
- **AVOID OFF-CENTER LOADS.** If the pressure Head Assembly seems unusually hard to press, immediately stop the operation. Disconnect the Shop Press from its compressed air supply source, and adjust the work piece to eliminate or diminish an off-center load. Do not operate the Shop Press if the work piece tilts or binds during the down movement of the Pressure Head Assembly.

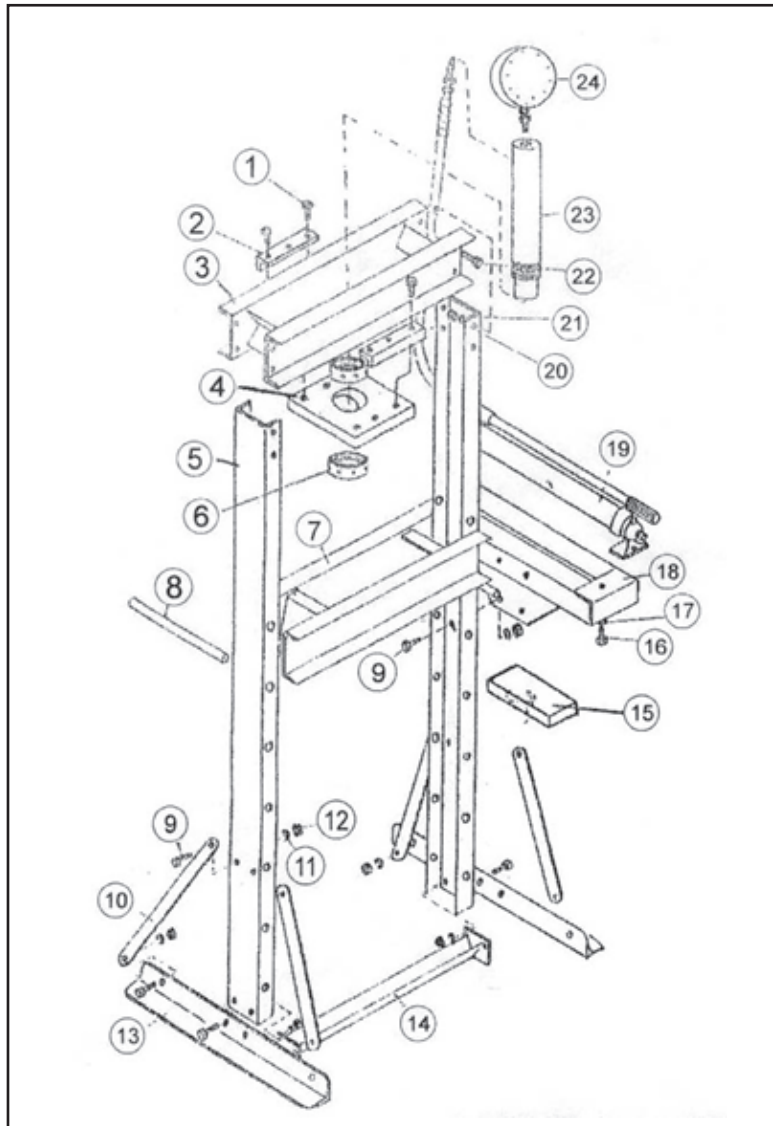
# SPECIFIC PRODUCT WARNINGS AND PRECAUTIONS

- **PRIOR TO LOWERING THE PRESSURE HEAD ASSEMBLY, MAKE SURE THE TOOL TRAYS, STANDS, AND ALL OTHER TOOLS AND EQUIPMENT ARE REMOVED FROM THE PRESS TABLE.**
- **ALWAYS KEEP HANDS, FINGERS AND FEET AWAY FROM THE PRESSURE HEAD ASSEMBLY AND PRESS TABLE DURING THE PRESSING PROCESS.**
- **NEVER ATTEMPT TO REMOVE A WORKPIECE STUCK IN THE MOVING PARTS OF THE SHOP PRESS WHILE IT IS CONNECTED TO ITS COMPRESSED AIR SUPPLY SOURCE.**
- **MAKE SURE THE WORKPIECE IS SUPPORTED AND CONTROLLED AT ALL TIMES DURING OPERATION.** Use a Roller Stand (not provided) with a larger work piece if necessary. Whenever possible, secure the work piece with clamps (not provided).
- **ONCE CONTACT BETWEEN THE PRESSURE HEAD AND WORKPIECE HAS BEEN MADE, STEP AWAY AS FAR AS POSSIBLE AND CONTINUE TO SLOWLY APPLY PRESSURE UNTIL THE PROCEDURE IS COMPLETED.**
- **NEVER LEAVE A COMPRESSED WORK PIECE UNATTENDED.** Whenever a work piece is compressed, there is a very large amount of force that has been stored in the work piece which must be controlled until the Pressure Head Assembly is relaxed.
- **KEEP THE OIL POWER UNIT PROPERLY FILLED WITH HYDRULIC OIL.**
- **ALWAYS RELACE A LOAD FROM THE SHOP PRESS, AND DISCONNECT THE SHOP PRESS FROM ITS COMPRESSED AIR SUPPLY SOURCE BEFORE PERFORMING ANY SERVICES OR MAINTENANCE.**
- **WARNING:** This product contains or produces a chemical known to the State of California to cause cancer and birth defects (or other reproductive harm). (California Health & Safety Code 25219.5 et seq.)

## Unpacking

- **When unpacking, check to make sure all parts listed as shown on drawing and parts page. If any parts are missing or broken, please call Cummins Industrial Tools at the number shown on the cover of this manual as soon as possible.**

# PARTS LIST



No.	Description	Qty	No.	Description	Qty
1	Bolt M8 x 35	6	13	Angle Steel	2
2	Ram Pressure Plate	2	14	Spreader	1
3	Crossbeam	1	15	Pad Plate	2
4	Fixed Plate	1	16	Bolt Washer Ø10	3
5	Upright Post	2	17	Lock Washer Ø10	3
6	Round Nut	2	18	Ram Base	1
7	Press Platform	1	19	Pump	1
8	Rod	2	20	Nut M16	8
9	Bolt M8 x 30	16	21	Lock Washer Ø16	8
10	Support	4	22	Bolt M16 x 30	8
11	Lock Washer Ø 8	22	23	Ram	1
12	Nut M8	16	24	Pressure Gauge	1