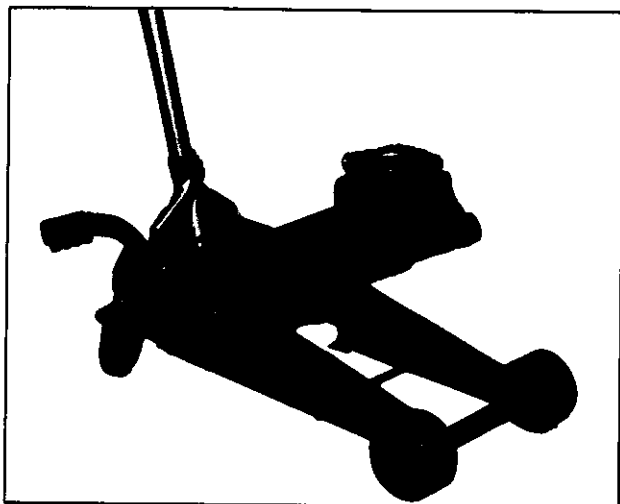




## Assembly & Instruction Manual **ITEM 3201**



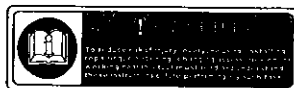
# 3-1/2 TON FLOOR JACK

THANK YOU FOR BUYING CUMMINS INDUSTRIAL TOOLS  
You can purchase additional items at  
[www.cumminstools.com](http://www.cumminstools.com)

**SAVE THIS MANUAL FOR FUTURE REFERENCE**



Customer Service Postal Address:  
1290 35 Road  
Minden, NE 68959  
Voice: 1-(308) 832-2070  
Fax: 1-(308) 832-2069



Our new 3-1/2 TON FLOOR JACK has been engineered and manufactured to Cummins Industrial Tools high standards for dependability, ease of operation, and operator safety. Pay close attention to the Rules for Safe Operation, Warnings, and Cautions. If you use your machine properly and only for what it is intended, you will enjoy years of safe, reliable service.

## SAFETY WARNINGS AND PRECAUTIONS

**WARNING:** When using tool, basic safety precautions should always be followed to reduce the risk of personal injury and damage to equipment. Read all instructions before using the tool!

- **Work area conditions.** Cluttered areas invite injuries.
- **Additional work area conditions.** Do not use machines or power tools in damp or wet locations. Do not expose to rain. Keep work area well lighted.
- **Keep children away.** Children must never be allowed in the work area. Do not let them handle machines, tools or extension cords.
- **Store idle equipment.** When not in use, tools must be stored in a dry location to inhibit rust. Always lock up tools and keep out of reach of children.
- **Use the right tool for the job.** Do not attempt to force a small tool or attachment to do the work of a larger industrial tool. There are certain applications for which this tool was designed. It will do the job better and more safely at the rate for which it was intended. Do not modify this tool and do not use this tool for a purpose for which it was not intended.
- **Dress properly.** Do not wear loose clothing or jewelry as they can be caught in moving parts. Protective, electrically non-conductive clothes and non-skid footwear are recommended when working. Wear restrictive hair covering to contain long hair.
- **Use eye protection.** Always wear ANSI approved impact safety glasses underneath a full face shield during use. Also, wear heavy duty work gloves.
- **Do not overreach.** Keep proper footing and balance at all times. Do not reach over or across running machines.
- **Maintain tools with care.** Keep tools sharp and clean for better and safer performance. Follow instructions for lubricating and changing accessories. The handles must be kept clean, dry, and free from oil and grease at all times.
- **Remove adjusting keys and wrenches.** Check that keys and adjusting wrenches are removed from the tool or machine work surface before starting work.
- **Stay alert.** Watch what you are doing, use common sense. Do not operate any tool when you are tired.
- **Check for damaged parts.** Before using any tool, any part that appears damaged should be carefully checked to determine that it will operate properly and perform its intended function. Any part that is damaged should be replaced.
- **Replacement parts and accessories.** When servicing, use only identical replacement parts. Use of any other parts will void the warranty. Only use accessories intended for use with this tool. Approved accessories are available from Cummins Industrial Tools.
- **Do not operate tools if under the influence of alcohol or drugs.** Read warning labels on prescriptions to determine if your judgment or reflexes are impaired while taking drugs. If there is any doubt, do not operate the tool.

**WARNING:** The warnings, cautions, and instructions discussed in this instruction manual can not cover all possible conditions and situations that may occur. It must be understood by the operator that common sense and caution are factors which can not be built into this product, but must be supplied by the operator.

# OPERATING INSTRUCTIONS

## Important Information

- This jack is a lifting device designed **ONLY** for lifting part of the total vehicle (i.e., one wheel). Do not move or dolly the vehicle while it is on the jack.
- Position this jack to **ONLY** lift on the areas of the vehicle as specified by the vehicle manufacturer.
- After lifting the vehicle, **ALWAYS** support the load with appropriately rated vehicle support stands **BEFORE** working on the vehicle.
- Do not overload this jack beyond its rated capacity. Overloading can cause damage to or failure of the jack.
- This jack is designed **ONLY** for use on hard level surfaces capable of sustaining the load. Use on other than hard level surfaces can result in jack instability and possible loss of load.
- Center load on jack saddle **BEFORE** lifting vehicle. Off-center loads and loads lifted when the jack is not level can cause loss of load or damage to the jack.
- Study, understand and follow all instructions in this manual **BEFORE** operating the jack.
- Failure to heed these warning may result in loss of load, damage to the jack and / or jack failure resulting in personal injury or property damage.
- never use speedy lift device to raise load.

## Operating Principles

- An upward stroke of the jack handle draws oil from the reservoir tank into the plunger cavity. Hydraulic pressure holds the valve closed, which keeps the oil in the plunger cavity.
- A downward stroke of the jack handles release oil into the cylinder, which forces the ram out. This raise the saddle. (Note: Raised if the load exceeds the rated capacity. Oil is automatically released back to the reservoir through the safety overload valve.
- When the ram reaches maximum extension. Oil is bypassed back into the reservoir to prevent an overextended ram stroke and possible damage to the jack.
- Opening the release valve allows oil to flow back into the reservoir. This releases hydraulic pressure on the ram, which results in lowering the saddle.

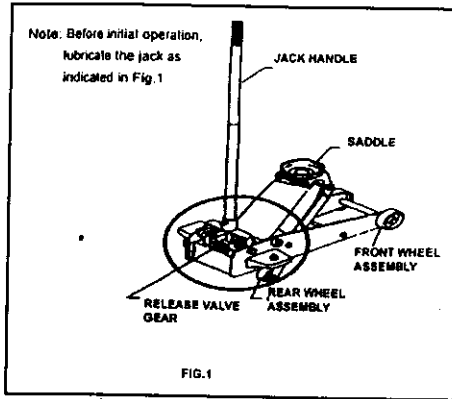
## Raising The Jake

- Close release valve by turning the handle clockwise.
- Block the vehicle's wheels for lifting stability.
- Refer to the vehicle manufacturer owners manual to locate approved lifting points on the vehicle. Position jack so that the saddle (see Fig 1) is centered under the load at an appropriate lift point.
- Pump jack handle or speedy lift lever until lever until saddle **NEARS** contact with the vehicle. Check to see that the saddle is centered and will contact the load lifting point firmly.
- Continue to pump the jack handle to lift the vehicle to the desired height. After lifting, support the load with appropriately rated vehicle support stand **BEFORE** working on the vehicle.
- No person should remain in a vehicle that is being jacked.

# MAINTENANCE

## Maintaining Oil Level

■ Important Note: When adding or replacing oil, ALWAYS use good grade hydraulic jack oil. DO NOT use Hydraulic Brake Fluid, Alcohol, Glycerin, Detergent Motor Oil and dirty oil. use of an improper fluid can cause serious internal damage to your jack.



## PROBLEM - SOLVING HINTS

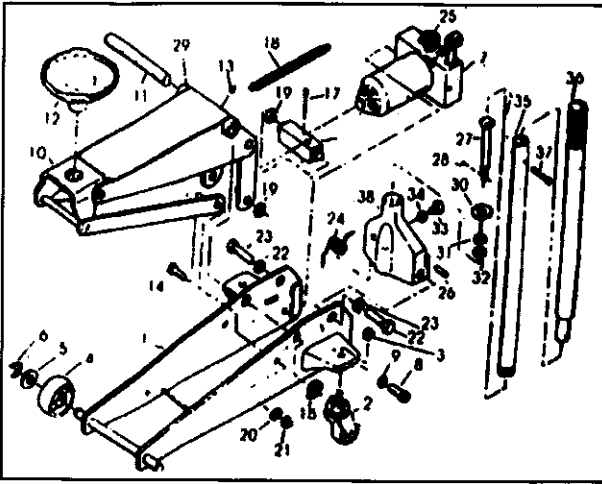
- |  |  |
|--|--|
| ■ Jack will not lift load.               | ■ Poor jack lifting. Pump feels spongy.            |
| ■ Jack will lift load but will not hold. | ■ Jack will not lift to full height.               |
| ■ Jack will not lower completely.        | ■ Handle raises by itself when jack is under load. |

## Possible Causes And Solutions

Refer to Operation and maintenance procedures for detailed information.

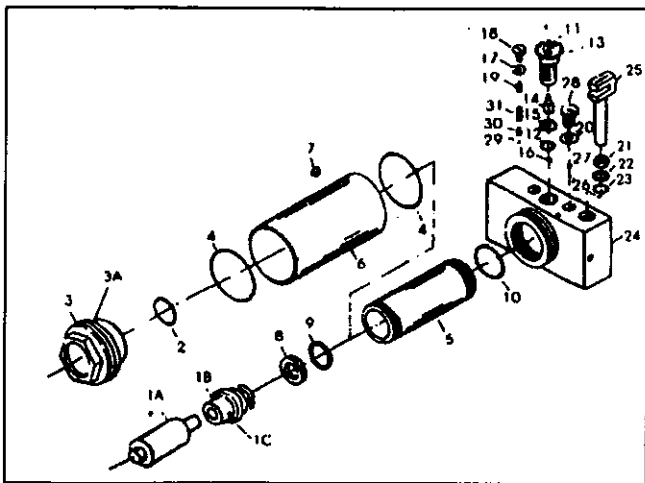
- Release valve not tightly closed. To close or tighten, turn release valve clockwise.
- Air is in hydraulic system. Release air from system.
- Oil level is low in jack. Add oil as required.
- Oil reservoir is over-filled. Drain out some oil. Lubrication of moving parts is necessary.
- Power unit is malfunctioning. Replace the power unit.

# PARTS LIST - MAIN BODY ASSEMBLY



No	Description	Qty
1	Side Plate	2
2	Caster Assembly	2
3	Lock Nut	2
4	Wheel	2
5	Washer	2
6	Retaining Ring	2
7	Power Unit Assembly	1
8	Screw	2
9	Lock Washer	2
10	Linkage Assembly	1
11	Shaft Arm	1
12	Saddle	1
13	Grease fitting	1
14	Bolt Link	2
15	Retaining Ring	1
16	Ram	1
17	Pin	1
18	Return Spring	1
19	Retaining Ring	2
20	Lock Washer	2
21	Hex Nut	2
22	Lock Washer	2
23	Bolt	2
24	Torsion Spring	1
25	Release Valve Assembly	1
26	Plunger Pin	1
27	Gear Shaft	1
28	Pin	1
29	Lifting Arm Assembly	1
30	Release Valve Gear	1
31	Lock Washer	1
32	Hex Nut	1
33	Handle Bolt	1
34	Spacer	1
35	Handle (lower)	1
36	Handle (upper)	1
37	Screw	1
38	Handle Socket	1

## PARTS LIST - MAIN BODY ASSEMBLY



No	Description	Qty
1A	Ram Rod	1
1B	Ram Head	1
1C	Ram Head Pin	1
2	O-Ring	1
3	Tank Nut	1
4	O-Ring	2
5	Cylinder	1
6	Reservoir	1
7	Oil In Plug	1
8	O-Ring Retaining	1
9	O-Ring	1
10	O-Ring	1
11	Gear Retaining Nut	1
12	O-Ring	1
13	Release Valve Assembly	1
14	Actuator	1
15	Guide Plate	1
16	Ball	1
17	Seal Washer	1
18	Plug Screw	1
19	Overload Valve Screw	1
20	Washer	1
21	Wiper	1
22	Back-up Ring	1
23	O-Ring	1
24	Valve Block	1
25	Plunger	1
26	Ball	1
27	Ball	1
28	Plug Screw	1
29	Ball	1
30	Plunger	1
31	Spring	1
32	Repaint Kit(nor shown)	1