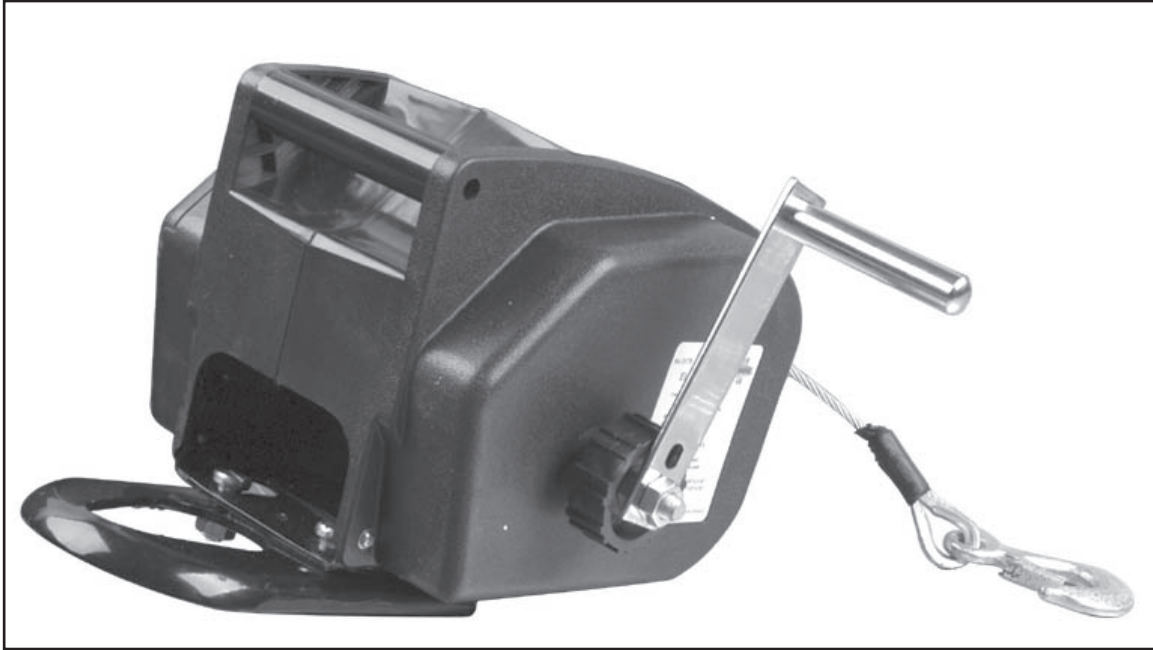




Assembly & Instruction Manual

ITEM 3179

VENDOR: A | SERIES: 1



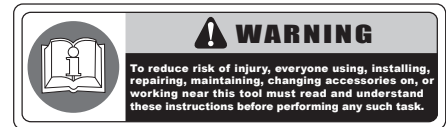
2000 lb. ELECTRIC WINCH - 12 VOLT -

THANK YOU FOR BUYING CUMMINS INDUSTRIAL TOOLS
You can purchase additional items at
www.cumminstools.com

SAVE THIS MANUAL FOR FUTURE REFERENCE



Customer Service Postal Address:
1290 35 Road
Minden, NE 68959
Voice: 1-(308) 832-2070
Fax: 1-(308) 832-2069



Your new 2000 lb. Electric Winch has been engineered and manufactured to Cummins Industrial Tools high standards for dependability, ease of operation, and operator safety. Pay close attention to the Rules for Safe Operation, Warnings, and Cautions. If you use your machine properly and only for what it is intended, you will enjoy years of safe, reliable service.

SAFETY WARNINGS AND PRECAUTIONS

WARNING: When using tool, basic safety precautions should always be followed to reduce the risk of personal injury and damage to equipment. Read all instructions before using the tool!

- **Work area conditions.** Cluttered areas invite injuries.
- **Additional work area conditions.** Do not use machines or power tools in damp or wet locations. Do not expose to rain. Keep work area well lighted.
- **Keep children away.** Children must never be allowed in the work area. Do not let them handle machines, tools or extension cords.
- **Store idle equipment.** When not in use, tools must be stored in a dry location to inhibit rust. Always lock up tools and keep out of reach of children.
- **Use the right tool for the job.** Do not attempt to force a small tool or attachment to do the work of a larger industrial tool. There are certain applications for which this tool was designed. It will do the job better and more safely at the rate for which it was intended. Do not modify this tool and do not use this tool for a purpose for which it was not intended.
- **Dress properly.** Do not wear loose clothing or jewelry as they can be caught in moving parts. Protective, electrically non-conductive clothes and non-skid footwear are recommended when working. Wear restrictive hair covering to contain long hair.
- **Use eye protection.** Always wear ANSI approved impact safety glasses underneath a full face shield during use. Also, wear heavy duty work gloves.
- **Do not overreach.** Keep proper footing and balance at all times. Do not reach over or across running machines.
- **Maintain tools with care.** Keep tools sharp and clean for better and safer performance. Follow instructions for lubricating and changing accessories. The handles must be kept clean, dry, and free from oil and grease at all times.
- **Remove adjusting keys and wrenches.** Check that keys and adjusting wrenches are removed from the tool or machine work surface before starting work.
- **Stay alert.** Watch what you are doing, use common sense. Do not operate any tool when you are tired.
- **Check for damaged parts.** Before using any tool, any part that appears damaged should be carefully checked to determine that it will operate properly and perform its intended function. Any part that is damaged should be replaced.
- **Replacement parts and accessories.** When servicing, use only identical replacement parts. Use of any other parts will void the warranty. Only use accessories intended for use with this tool. Approved accessories are available from Cummins Industrial Tools.
- **Do not operate tools if under the influence of alcohol or drugs.** Read warning labels on prescriptions to determine if your judgment or reflexes are impaired while taking drugs. If there is any doubt, do not operate the tool.

WARNING: The warnings, cautions, and instructions discussed in this instruction manual can not cover all possible conditions and situations that may occur. It must be understood by the operator that common sense and caution are factors which can not be built into this product, but must be supplied by the operator.

SPECIFICATIONS

Specifications

■ Capacity	6000 lb. Rolling 5000 lb. Marine 2000 lb. Pulling Capacity	■ Power Supply	12 Volts
■ Max. Boat Size	18'	■ Power Cord	6' Negative Lead 14' 9" Positive Lead
■ Max. Boat Weight	5000 lb.	■ Remote Switch	9' 9"
■ Line Speed	6' / Minute with load	■ Mounting Plate	8-3/4" x 4-5/16" x 3/16"
■ Cable Length	30'	■ Dimensions	9-1/2" x 7-1/2" x 10"
■ Hook Size	3/4" Opening x 3-3/4" Long	■ Net Weight	18.6 lb.

Included Accessories

- Power Lead, fitted with water sealed plug and circuit breaker.
- Remote Switch with water sealed plug, for safe operation.
- 30 ft Aircraft Cable with attached hook.
- Mounting bracket for Trailer Hitch.
- Emergency Crank Handle and adjustable clutch.

Product Features

- Convenient, portable power for pulling boats, stuck vehicles and other heavy items.
- Powerful 2800 lb pulling power.
- 12 Volt powered for convenient use without extension cords or small gas engines .
- Portable, with built-in carrying handle and quick-attach mounting plate.

Save This Manual

- You will need this manual for the safety warnings and cautions, assembly instructions, operation procedures, maintenance procedures, trouble shooting, parts list, and diagram, keep your invoice with this manual. Write the invoice number on the inside of the front cover. Keep both this manual and your invoice in a safe, dry place for future reference.

Note: The warnings, cautions, and instructions discussed in this instruction manual cannot cover all possible conditions and situations that may occur. It must be understood by the operator that common sense and caution are factors which cannot be built into this product, but must be supplied by the operator.

SPECIAL WARNINGS WHEN USING THIS ELECTRIC WINCH

Using this powerful tool may create special hazards.
Take particular care to safeguard yourself and those around you.

The Cable

- Be sure the cable is in good condition, and is attached properly.
- Do not use the winch if the cable is frayed.
- Do not replace the cable with a cable of lesser strength.

The Battery

- Be sure the battery is in good condition. Avoid contact with battery acid or other contaminants.
- Always wear ANSI approved eye protection when working around a battery.
- Have the engine running when using the winch, to avoid running the battery down.

Stand Back

- Stay out of the direct line that the cable is pulling. In case it slips or breaks, it will whiplash along this line.
- Keep hands, clothing, hair and jewelry clear of the winch while in use.
- Use a spotter to assist you in assuring that it is safe to operate the winch. Make sure this person is out of the way of the vehicle and the cable before activating the winch.

Power Limits

- Do not attempt to exceed the pulling limits of this winch.
- Never use the hand crank to assist the winch. This will damage the winch and may cause personal injury.

INSTALLATION

Wiring your electric winch - Your winch may be used with temporary wiring or permanent wiring.

Temporary Wiring

- Lift the rubber seal, and plug the POWER CABLE into the PLUG on the right side of the winch body. This plug is labeled power. Route the Electric Cord from the winch to your battery, being careful to avoid tangling it in moving equipment, or causing a tripping hazard.
- Connect the Black Clamp Handle of the POWER CABLE to the frame of your vehicle, establishing a ground connect the Red Clamp Handle to the positive (+/Red) terminal of your battery. Note: Be sure you are using a 12V automotive battery or equivalent, in good condition.
- Lift the rubber scale on the left side of the winch body. Taking the Remote Control Unit, insert the Socket at the end of the cord into the Plug on the left side of the winch body labeled Remote Control.
- Set the remote control aside in a safe until ready for use.

Permanent Wiring

- Attach the OVER-CURRENT PROTECTOR to the Positive (+/Red) terminal of your battery, using the battery terminal clamp bolt.
- Plan a route for the wiring from the point of the vehicle where the winch will be mounted or used to the battery. This route must be secure, out of the way of moving part, road debris, or any possibility of being damaged by operation or maintenance of the vehicle. For example using suitable fasteners. Do not attach the wires to the exhaust system, drive shaft, emergency brake cable, fuel line, or any other components that may create damage. Wiring through areas of heat or motion can cause serious fire hazards ! !
- If you drill through the bumper or any part of the body to route the wires, be sure to install a rubber grommet in the hole to prevent fraying of the wires at that point.
- Route the POWER CABLE from the point the winch will be used to the battery, following the precautions discussed above.
- Remove the Red Clamp handle, and attach the red wire to the OVER-CURRENT PROTECTOR (#31) which is mounted onto the Positive (+/Red) terminal of your battery.
- Remove the Black Clamp handle, and attach the black wire to the frame of your vehicle, creating a secure electrical ground.

Warning:

- Always connect Red to Red (Positive to positive) and Black to the frame, making a ground connection, when using battery power from your vehicle.
- You may wish to keep your engine running while using this winch, to continually recharge the battery. However, exercise extreme caution when working around a running vehicle.
- Do not use a dirty, corroded or leaking battery. You may suffer injury from acid burns.
- Always wear ANSI approved safety glasses when working around or with a battery.

OPERATING INSTRUCTIONS

Mounting Your Winch

Your winch is designed to be mounted temporarily, using the Trailer Hitch Mounting Bracket. However, you may also mount your winch permanently.

Permanent Mounting

- Select a mounting site on the bumper of your vehicle, truck bed, boat trailer, or other suitable location. **NOTE: This winch can generate 2800 lbs. Pulling force. Be sure the location you select can withstand this much force. You may need to use steel reinforcement plates, or weld on additional bracing, depending on the desired mounting location.**
- Align the winch with the desired location, and mark for drilling the locations of the 4 holes on the base of the winch.
- Drill these locations on your vehicle.
- Using hardened steel bolts at least 3/8 in diameter, install your winch to the location.

Temporary Mounting

- Attach the (3) plate stud bolts to the Adapter Plate, as shown, using the supplied Nuts. Tighten securely.
- Index the heads of the plate studs into the keyhole slots on the back of the winch.
- Attach the winch/Adapter Plate assembly to your trailer hitch, by inserting the trailer hitch ball through the shaped hole in the Adapter Plate.

Using Your Winch

- Put your vehicle in Neutral. (Never winch with your vehicle in Gear or in Park, since this could damage your vehicle's transmission.) Put your emergency brake ON. Turn your wheels and chock them to prevent any unsafe movement of vehicle.
- To pull out the cable, turn the CLUTCH KNOB (#48) counterclockwise to loosen then pull out the cable you need. Always leave at least three turns of cable on the spool to prevent pulling the cable out of the winch.
- Hook onto the object using a pulling point, tow strap or chain. Never wrap the cable around the object and hook onto the cable itself. This can cause damage to the object being pulled, and kink or fray the cable.
- Re-tighten the clutch knob.
- Stand clear, and when it is safe to do so, use the power switch in the remote control to retract the cable, and winch the item as desired.

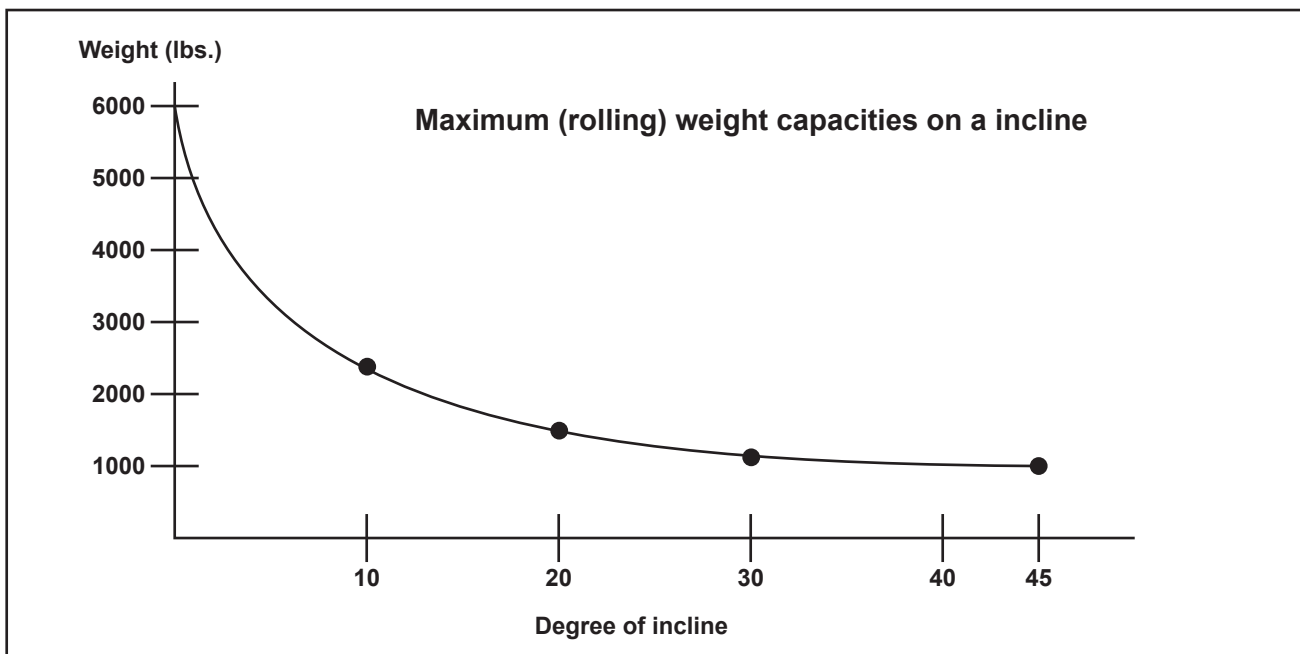
Warning:

- Never use the winch if the cable is frayed, kinked or damaged.
- Never allow anyone to stand near the cable, or in line with the cable behind the winch while it is under power. If the cable should slip or break, it can suddenly whip back towards the winch, causing a hazard for anyone in the area. Always stand well to the side while winching.

OPERATING INSTRUCTIONS

Pulling Capacity

- This winch has a capacity of 2000 lbs. Applying this measurement to practical applications, you can use this winch to move the following.
- Move a load from a dead stop of up to 2000 lbs, on level ground.
- Move a water borne craft of up to 4800 lbs.
- Maintain movement of a wheeled vehicle of up to 6000 lbs.
- Pulling Capacity is reduced as incline increases. For example, rolling capacity is reduced from 6000 lbs on flat ground to 1100 lbs. on a 45° incline. Please refer to the following chart for estimated pulling capacity (rolling weight) on various inclines.



Using The Emergency Hand Crank

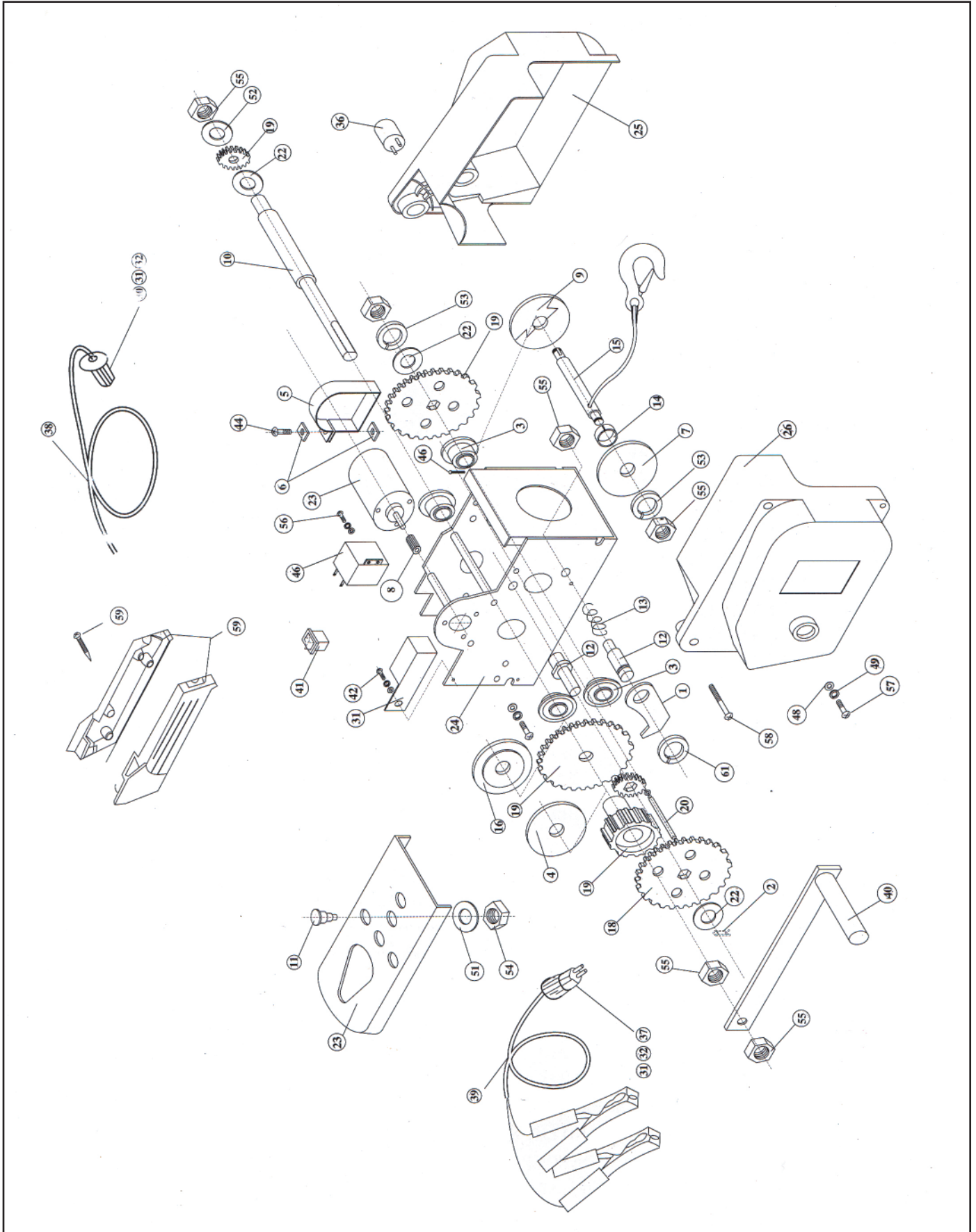
Warning: Do not use the crank to assist an operation winch. This will damage the winch and may cause personal injury.

- Turn the clutch knob clockwise until hand tight. Do not force it or over tighten.
- Place the end of the hand crank over the flattened end of threaded shaft on the left side of the winch.
- Rotate the hand crank clockwise to tighten the cable. Continue to turn until the cable has been completely retracted.

Maintenance

- Lubricate the cable occasionally with light oil.
- Grease the gears every 6 months. To do this, remove the clutch knob and separate the left and right housing. Use any good quality waterproof grease.

PARTS LIST



PARTS LIST

No.	Description	No.	Description	No.	Description	No.	Description
1	Claw Lock	17	Bearing	33	Socket	49	Lock Spring
2	Spring Lock	18	Gear Assembly	34	Nut	50	Lock Spring
3	Bearing	19	Clutch Knob	35	Plate	51	Lock Spring
4	Friction Plate	20	Shaft	36	Cord Plug	52	Lock Spring
5	Fast Plate	21	Shaft Assembly	37	Cord Socket	53	Nut
6	Fast Plate	22	Lock Washer	38	Wire	54	Nut
7	Plate	23	Adapter Plate	39	Electrical Cord	55	Nut
8	Bearing	24	Frame	40	Hand Crank	56	Nut
9	Plate	25	Right Shell	41	Switch	57	Screw
10	Shaft	26	Left Shell	42	Wire	58	Screw
11	Screw	27	Plate	43	Motor	59	Self-Tapping Screw
12	Shaft Lock	28	Cover	44	Not Used	60	Split-pin
13	Spring	29	Remote Control Housing	45	Circular Breaker	61	Lock Washer
14	Cable Ring	30	Plug	46	Relay		
15	Cable Assembly	31	Plate	47	Lock Washer		
16	Plate	32	Cord Protector	48	Lock Washer		