



Assembly & Instruction Manual **ITEM 3125**



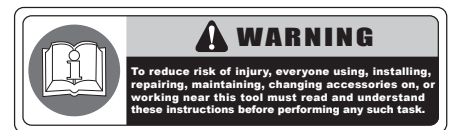
2 TON MINI HYDRAULIC FLOOR JACK

THANK YOU FOR BUYING CUMMINS INDUSTRIAL TOOLS
You can purchase additional items at
www.cumminstools.com

SAVE THIS MANUAL FOR FUTURE REFERENCE



Customer Service Postal Address:
1290 35 Road
Minden, NE 68959
Voice: 1-(308) 832-2070
Fax: 1-(308) 832-2069



WARNING
To reduce risk of injury, everyone using, installing, repairing, maintaining, changing accessories on, or working near this tool must read and understand these instructions before performing any such task.

Your new 2 Ton Mini Hydraulic Floor Jack has been engineered and manufactured to Cummins Industrial Tools high standards for dependability, ease of operation, and operator safety. Pay close attention to the Rules for Safe Operation, Warnings, and Cautions. If you use your machine properly and only for what it is intended, you will enjoy years of safe, reliable service.

SAFETY WARNINGS AND PRECAUTIONS

WARNING: When using tool, basic safety precautions should always be followed to reduce the risk of personal injury and damage to equipment. Read all instructions before using the tool!

- **Work area conditions.** Cluttered areas invite injuries.
- **Additional work area conditions.** Do not use machines or power tools in damp or wet locations. Do not expose to rain. Keep work area well lighted.
- **Keep children away.** Children must never be allowed in the work area. Do not let them handle machines, tools or extension cords.
- **Store idle equipment.** When not in use, tools must be stored in a dry location to inhibit rust. Always lock up tools and keep out of reach of children.
- **Use the right tool for the job.** Do not attempt to force a small tool or attachment to do the work of a larger industrial tool. There are certain applications for which this tool was designed. It will do the job better and more safely at the rate for which it was intended. Do not modify this tool and do not use this tool for a purpose for which it was not intended.
- **Dress properly.** Do not wear loose clothing or jewelry as they can be caught in moving parts. Protective, electrically non-conductive clothes and non-skid footwear are recommended when working. Wear restrictive hair covering to contain long hair.
- **Use eye protection.** Always wear ANSI approved impact safety glasses underneath a full face shield during use. Also, wear heavy duty work gloves.
- **Do not overreach.** Keep proper footing and balance at all times. Do not reach over or across running machines.
- **Maintain tools with care.** Keep tools sharp and clean for better and safer performance. Follow instructions for lubricating and changing accessories. The handles must be kept clean, dry, and free from oil and grease at all times.
- **Remove adjusting keys and wrenches.** Check that keys and adjusting wrenches are removed from the tool or machine work surface before starting work.
- **Stay alert.** Watch what you are doing, use common sense. Do not operate any tool when you are tired.
- **Check for damaged parts.** Before using any tool, any part that appears damaged should be carefully checked to determine that it will operate properly and perform its intended function. Any part that is damaged should be replaced.
- **Replacement parts and accessories.** When servicing, use only identical replacement parts. Use of any other parts will void the warranty. Only use accessories intended for use with this tool. Approved accessories are available from Cummins Industrial Tools.
- **Do not operate tools if under the influence of alcohol or drugs.** Read warning labels on prescriptions to determine if your judgment or reflexes are impaired while taking drugs. If there is any doubt, do not operate the tool.

WARNING: The warnings, cautions, and instructions discussed in this instruction manual can not cover all possible conditions and situations that may occur. It must be understood by the operator that common sense and caution are factors which can not be built into this product, but must be supplied by the operator.

OPERATING INSTRUCTIONS

WARNING: This is a lifting device for inspecting or working under a vehicle. It is only supported by its intended capacity. Do not overload, its capacity of 2 tons. Overloading can cause damage to the jack. Failure of following the rule can result in personal injury or property damage. This jack is designed for use on hard surfaces. Using on area other than a hard surface can result in jack instability and even possible load loss.

- Assemble handle front section to larger section using the pin provided.
- When this jack leaves the factory for shipment. The vent plug on the top of the oil chamber is closed to prevent the oil from being spilled. Also the oil chamber has the right amount of oil before shipment. Before using for the first time, remove the cover plate and unscrew the vent plug until there is a 1/16" gap. If oil spilling is evident. Or if vent plug was found open. It is necessary to check oil level before pumping. See instructions.
- With release valve open, pump handle about 6 full strokes to assure complete distribution of oil. Close release valve, and the jack is ready to use.
- Always center the load on the saddle of the jack. Off-center loads and loads lifted while the jack is not sitting level may damage the jack.

General Care Of Your Jack

- When the jack is not in use, lifting arm and pump lever should be in full down position. This will protect precision machined surfaces of the ram and the piston, from corrosion
- Container is filled with 7fl oz. Of hydraulic jack oil.
- Keep your jack clean and well lubricated. As well as the outside moving parts such as the lifting arm spindle. Wheel bearings and cross head pin.
- Should any other parts be required, please refer to the sectional drawings and quote appropriate serial number of the jack when ordering.

HOW TO LOCATE AND REMEDY TROUBLE

If The Jack Will Not Raise Or Lift Load

- Before attempting to locate the specific trouble, inspect oil level in the following manner: Place the jack on level surface. Open release valve, correct oil level is at the bottom of the thread inside oil chamber. When lifting arm is at full down position. If tacking, remove oil vent plug located under cover plate. Fill with oil to correct level and install and tighten the plug. Close release valve and pull lifting arm up to its full height. Then open release valve and by stepping on saddle, force it down firmly but slowly. Repeat this operation three or four times. This procedure will thoroughly flush the valves and assure complete distribution of oil. In most cases it will restore to proper working order. Close release valve tightly. Try jack under load.
- The jack may have air trapped in the system. Open release valve. Pump handle 6 full strokes. Close release valve and try jack again.
- O-ring seal for pump may be worn, this will happen only after months of service. A new o-ring seal or a complete new piston can be purchased and easily installed.
- Release valve may be held open by dirt on seat. Flush by pulling arm up and down several times while release valve is open. If necessary the release valve may be removed for cleaning the valve and valve seat.

If The Jack Lowers Under Load

- The discharge valve may be held open by dirt on ball seat when a dirty discharge valve or ball seat exists. The jack may lower quickly. Causing handle to fly back with force. This is caused by the oil rushing back into the pump chamber through the open ball seal. When this happens it is advised to repeat this procedure at least once before proceeding to dis-assemble the Cummins Industrial 2 ton. The discharge valve is located at the bottom of the ram cylinder where there is a screen washer. This must be removed carefully and if damaged a new one must be fitted. Now remove the discharge valve ball and clean valve seal. Wipe ball and reseat in the ram, if needed replace ball. Use 1/4" diameter 3" long punch and small hammer. Place the punch on top of ball and give the punch a light tap with a small hammer. Screw in ram cylinder tightly. Replace washers top and bottom of oil chamber, install ram assembly, and screen in top nut.
- Cup seal for the ram may be worn. This is likely only in jacks that have give very heavy service.
- Dirt in the release valve will cause jack to lower under load. Remove release valve, clean valve.

If The Jack Will Not Lower Completely When Raised

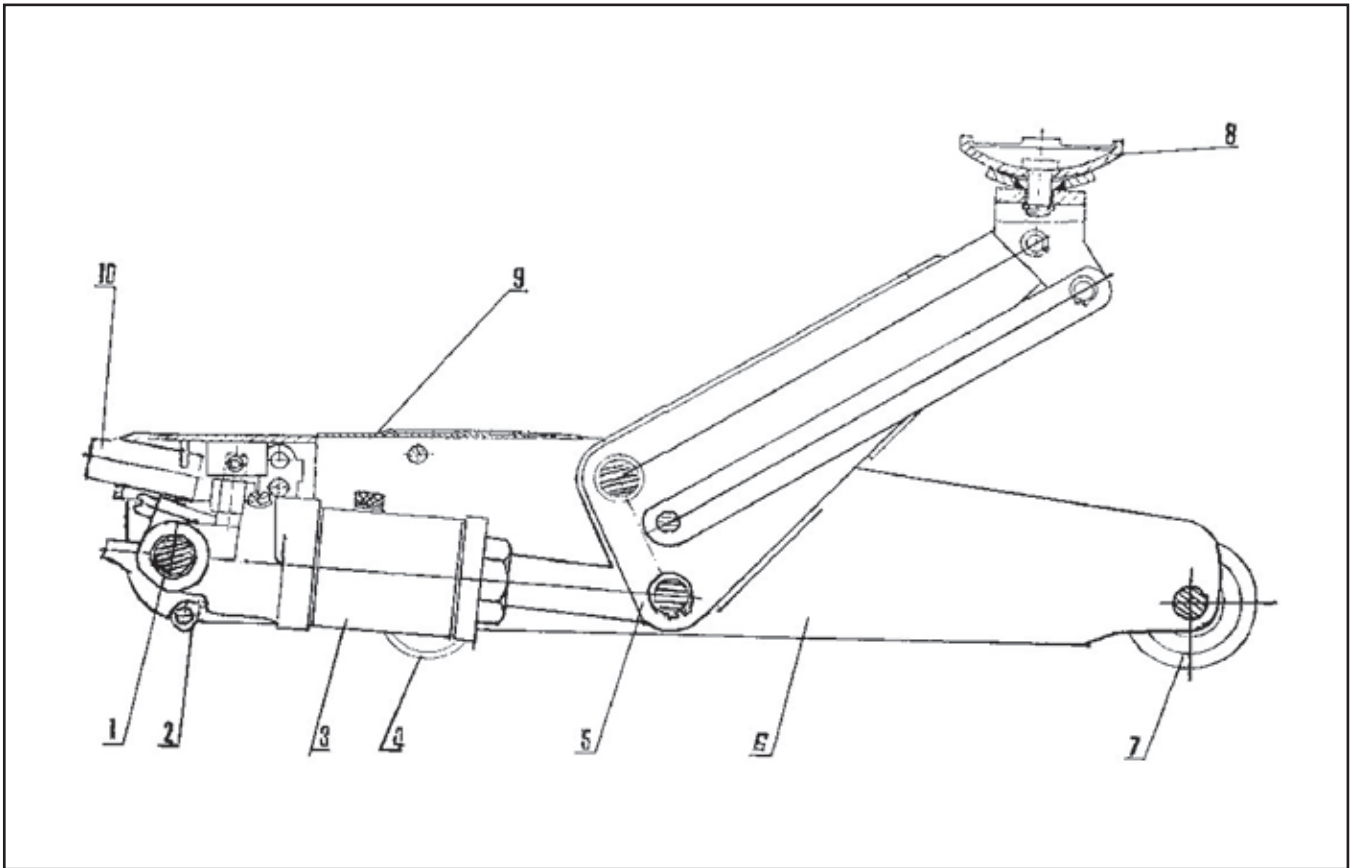
- Return spring for lifting arm may be broken or if un-hooked you may need to rehook.
- It probably needs lubrication. Clean and oil all moving parts in the lifting arm mechanism.

If The Jack Will Not Lift its Fully 2 Tons Capacity

- The o-ring seal for piston pump may be worn.
- The unit may have air trapped in the system.
- The overload valve is factory adjusted for the jack to lift 2 tons load and should not be altered. Examine jack for binding.

PART LIST

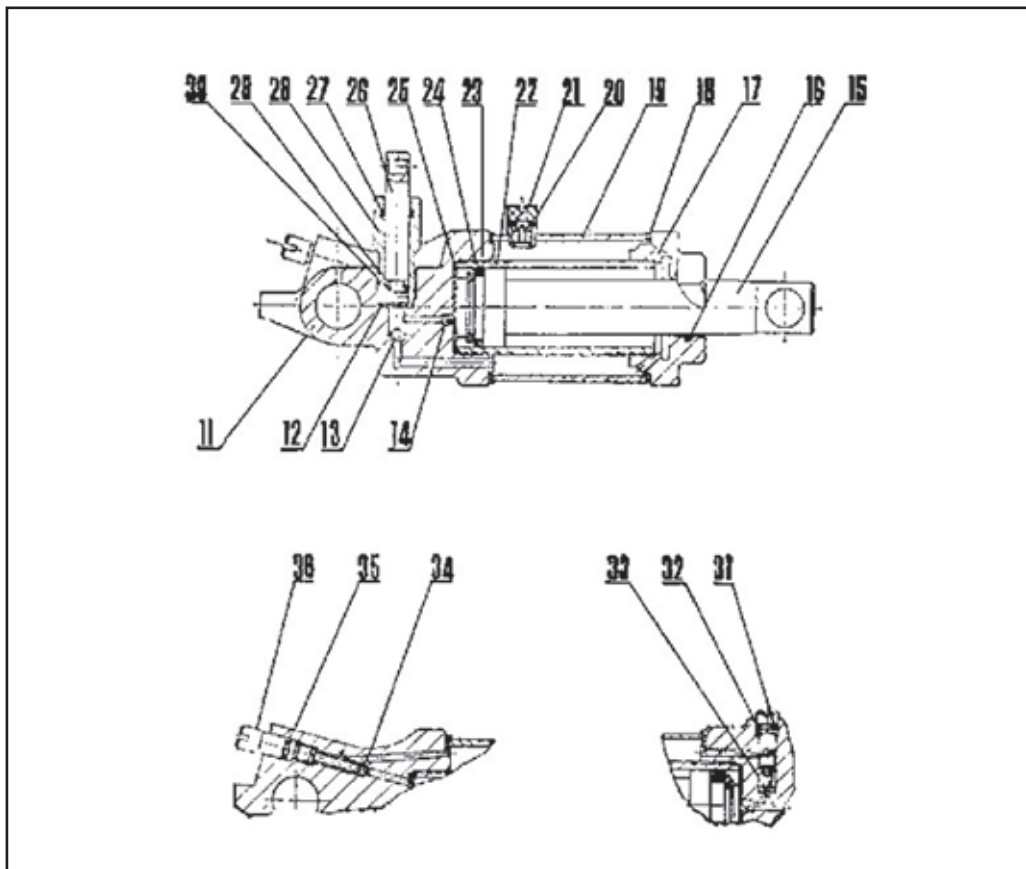
Frame Section, Floor Jack



No.	Part Number	Description	Quantity
1	0001	Spindle	2
2	0005	Spring Tension	1
3	3000	Hydraulic Unit Assembly	1
4	5002	Caster Wheel	2
5	4000	Lifting Arm Assembly	1
6	1000	Side Member Assembly - RH / LH	1 / 1
7	0011	Front Wheel	2
8	7201	Saddle	1
9	0006	Cover Plate	1
10	6000	Handle Base Assembly	1

PART LIST

Hydraulic Unit, Floor Jack



No.	Part Name	Description	Quantity	No.	Part Name	Description	Quantity
11	3001	Body Hydraulic Unit	1	24	3304	O-Ring, Cup Seal	1
12	3100	Screen Washer, Pump	1	25	3500	Screen Washer	1
13	0308	Steel Ball, Suction Value 1/4	1	26	3201	Piston	1
14	0308	Steel Ball, Discharge Value 3/13	1	27	3027	J-Ing Seal	1
15	3301	Ram	1	28	3003	Cylinder, Pump	1
16	3025	O-Ring Seal	1	29	3202	Wiper, Piston	1
17	3012	Top Nut	1	30	3203	O-Ring Seal, Piston	1
18	3014	Seal Washer, Oil Chamber	2	31	3019	O-Ring Seal, Overload Valve	1
19	3400	Oil Chamber	1	32	3020	Overload Valve Screw	1
20	3023	O-Ring Seal	1	33	0308	Steel Ball, Overload Valve 1/4	1
21	3011	Vent Plug	1	34	0308	Steel Ball, Release Valve 3/13	1
22	3013	Cylinder, Ram	1	35	3022	O-Ring Seal, Release Valve	1
23	3303	Cup Seal, Ram	1	36	3015	Release Valve Screw	1