



# Assembly & Instruction Manual

**ITEM 2120**

VENDOR: B | SERIES: 1



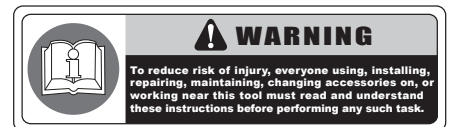
# AIR PALM NAILER

THANK YOU FOR BUYING CUMMINS INDUSTRIAL TOOLS  
You can purchase additional items at  
[www.cumminstools.com](http://www.cumminstools.com)

**SAVE THIS MANUAL FOR FUTURE REFERENCE**



Customer Service Postal Address:  
1290 35 Road  
Minden, NE 68959  
Voice: 1-(308) 832-2070  
Fax: 1-(308) 832-2069



Your new AIR PALM NAILER has been engineered and manufactured to Cummins Industrial Tools high standards for dependability, ease of operation, and operator safety. Pay close attention to the Rules for Safe Operation, Warnings, and Cautions. If you use your machine properly and only for what it is intended, you will enjoy years of safe, reliable service.

# TABLE OF CONTENTS

■ Introduction .....	1
■ General Safety Rules .....	2
■ Specific Safety Rules .....	3
■ Product Specifications .....	3
■ Unpacking .....	4
■ Feature .....	4
■ Assembly .....	5
■ Operation .....	5-6
■ Maintenance .....	7
■ Troubleshooting .....	8
■ Exploded Diagram & Parts List .....	9-10

## INTRODUCTION

- THIS PRODUCT has many features for making the use of this product more pleasant and enjoyable. Safety, performance, and dependability have been given top priority in the design of this product making it easy to maintain and operate.

**⚠ WARNING:** Do not attempt to use this product until you thoroughly read and completely understand the operator's manual. Pay close attention to the safety rules, including Dangers, Warnings, and Cautions. If you use your product properly and only as intended, you will enjoy years of safe, reliable service.

- ⚠** Look for this symbol to point out important safety precautions. It means attention!!! Your safety is involved.



**⚠ WARNING:** The operation of any tool can result in foreign objects being thrown into your eyes, which can result in severe eye damage. Before beginning operation, always wear safety goggles or safety glasses with side shields and a full face shield when needed. We recommend Wide Vision Safety Mask for use over eyeglasses or standard safety glasses with side shields. Always wear eye protection which is marked to comply with ANSI Z87.1.

# GENERAL SAFETY RULES

**⚠ WARNING:** When using tool, basic safety precautions should always be followed to reduce the risk of personal injury and damage to equipment. Read all instructions before using the tool!

- **Work area conditions.** Cluttered areas invite injuries.
- **Additional work area conditions.** Do not use machines or power tools in damp or wet locations. Do not expose to rain. Keep work area well lighted.
- **Keep children away.** Children must never be allowed in the work area. Do not let them handle machines, tools or extension cords.
- **Store idle equipment.** When not in use, tools must be stored in a dry location to inhibit rust. Always lock up tools and keep out of reach of children.
- **Use the right tool for the job.** Do not attempt to force a small tool or attachment to do the work of a larger industrial tool. There are certain applications for which this tool was designed. It will do the job better and more safely at the rate for which it was intended. Do not modify this tool and do not use this tool for a purpose for which it was not intended.
- **Dress properly.** Do not wear loose clothing or jewelry as they can be caught in moving parts. Protective, electrically non-conductive clothes and non-skid footwear are recommended when working. Wear restrictive hair covering to contain long hair.
- **Use eye protection.** Always wear ANSI approved impact safety glasses underneath a full face shield during use. Also, wear heavy duty work gloves.
- **Do not overreach.** Keep proper footing and balance at all times. Do not reach over or across running machines.
- **Maintain tools with care.** Keep tools sharp and clean for better and safer performance. Follow instructions for lubricating and changing accessories. The handles must be kept clean, dry, and free from oil and grease at all times.
- **Remove adjusting keys and wrenches.** Check that keys and adjusting wrenches are removed from the tool or machine work surface before starting work.
- **Stay alert.** Watch what you are doing, use common sense. Do not operate any tool when you are tired.
- **Check for damaged parts.** Before using any tool, any part that appears damaged should be carefully checked to determine that it will operate properly and perform its intended function. Any part that is damaged should be replaced.
- **Replacement parts and accessories.** When servicing, use only identical replacement parts. Use of any other parts will void the warranty. Only use accessories intended for use with this tool. Approved accessories are available from Cummins Industrial Tools.
- **Do not operate tools if under the influence of alcohol or drugs.** Read warning labels on prescriptions to determine if your judgment or reflexes are impaired while taking drugs. If there is any doubt, do not operate the tool.

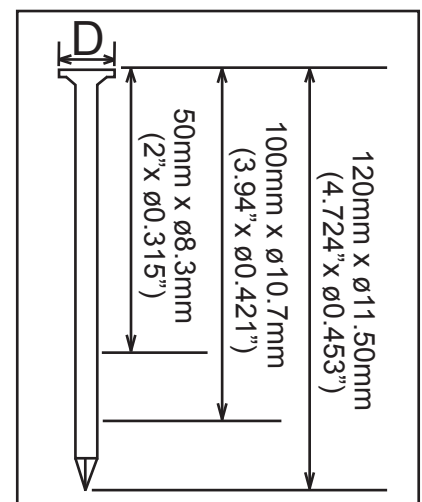
**⚠ WARNING:** The warnings, cautions, and instructions discussed in this instruction manual can not cover all possible conditions and situations that may occur. It must be understood by the operator that common sense and caution are factors which can not be built into this product, but must be supplied by the operator.

## SPECIFIC SAFETY RULES

- 1- Never use oxygen or other bottled gasses. Explosion may occur. Never use combustible gases or any other reactive gas as a power source for this tool: explosion and serious personal injury could result.
- 2- Do not connect tool to pressure which potentially exceeds 200 PSI (13.7 BAR).
- 3- Only use air hose that is rated for a maximum working pressure of at least 150 PSI (10.3 BAR) or 150% of the maximum system pressure, which ever is greater.
- 4- Only use approved quality parts ,fastners, and accessories.
- 5- Wear ear protection to safe-guard against possible hearing loss.
- 6- Use clean, dry, regulated, compressed air at 50 to 120 PSI, (3.4 to 8.3 BAR).
- 7- Connect tool to air supply hose with a coupling that automatically removes all pressure from the tool when the coupling is disconnected.
- 8- Disconnect tool from air supply hose before doing tool maintenance, clearing a jammed fastener,leaving work area, moving tool to another location, or handing the tool to another person.
- 9- Never use a tool that is leaking air, has missing or damaged parts, or requires repair. Make sure all screws and caps are securely tightened.
- 10- Fire fasteners into work surface only: never into materials too hard to penetrate.
- 11- Grip tool firmly to maintain control.
- 12- Do not drive fasteners on top of other fasteners, or with the tool at too steep an angle: the fasteners can ricochet causing personal injury.
- 13- Do not drive fasteners close to the edge of the workpiece. The workpiece is likely to split allowing the fastener to fly free or ricochet causing personal injury.
- 14- Operator and bystanders wear hard hat to safeguard against possible injuries.

## PRODUCT SPECIFICATIONS

- Cummins air nailer can use nails between 3-9/64" and 4-23/32"
- Stroke per minute: 1000BMP
- Air Inlet: 1/4" NPT
- Recommended Air Pressure: 60~120 PSI (4 ~ 8 BAR)
- Maximum Air Pressure: 120 PSI (8 BAR)
- Nail Type and Size: 21/64"D ~ 29/64"D
- Air Consumption: 1~2 CFM



# UNPACKING

## INSTRUCTIONS

### When unpacking the tool:

- Carefully remove the tool and accessories from the box.
- Make sure that all items listed in the packing list are included.
- Inspect the tool carefully to make sure no breakage or damage occurred during shipping.
- Do not discard the packing material until you have carefully inspected and satisfactorily operated the tool.

**⚠ WARNING:** If any part are missing do not operate the tool until the missing parts are replaced. Failure to do so could result in possible serious personal injury.

## FEATURE

- Cummins palm nailer is a heavy duty tool. The tool, as supplied, is assembled with the magnetic nail guide for driving 6d to 16d common flat head nails. Other guides included in the kit are the finish nail guide for 1-1/4" (3d) to 2-1/2" (8d) finish nails, standard guide (I) and bushing (H) for 4" (20d) to 6-1/2" (70d) common nails/spikes. A hammer head attachment (D-G) is also supplied, which is capable of various other driving tasks not suitable for the other three guides.

## POWER SOURCE

- This tool is designed to operate on clean, dry, compressed air at 3.4 to 8.3 BAR regulated pressures between 50 and 120 PSI. The preferred system would include a filter, a pressure regulator, and an automatic oiler located as close to the tool as possible (within 15 ft/4.6 m is ideal).
- All compressed air contains moisture and other contaminants that are detrimental to internal components of the tool. An air line filter will remove most of these contaminants and significantly prolong the life of the tool. If an in-line oiler is not available: place five or six drops of Air Tool Oil into the tool's air inlet at the beginning of each workday.
- The tool is equipped with a 1/4" male "quick connector". The tool must always be connected to the air supply with a coupling such that all pressure is removed from the tool when the coupling is disconnected.

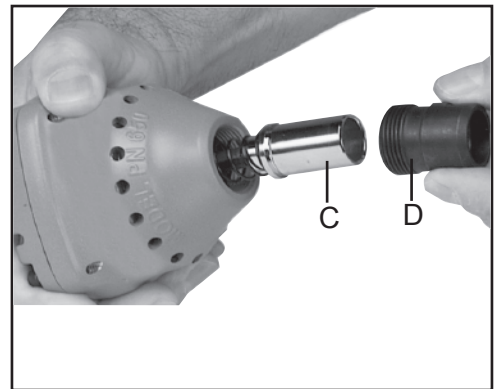
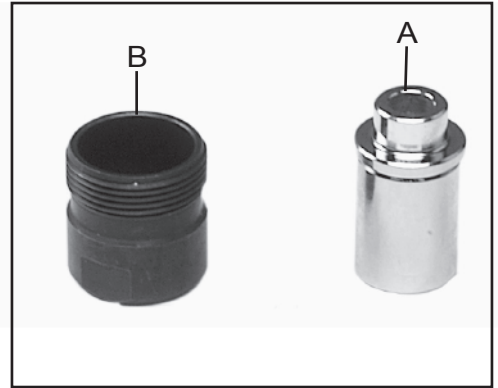
**⚠ WARNING:** All air line components (hoses, connectors, filters, regulators, etc.) must have a minimum working pressure rating of at least 150 PSI (10.3 BAR) or 150% of maximum system potential, whichever is greater.

- Do not connect tool to pressure which potentially exceeds 200 PSI (13.7 BAR).
- Only connect tool to air supply hose with a coupling that automatically removes all pressure from the tool when the coupling is disconnected.
- Disconnect tool from air supply before performing maintenance, clearing a jammed fastener, leaving work area, moving tool to another location, or handing the tool to another person.

# ASSEMBLY

## STANDARD NAIL GUIDE

- 1- **⚠ WARNING:** Disconnect tool from air supply.
- 2- Standard (spike) nail guide has a  $\frac{3}{4}$ " ID and is used for driving large 4" (20d) to 6-1/2" (70d) common nails/spikes.
- 3- To install standard (spike) nail guide and bushing, lay tool on its cap with nail guide pointing upward. Loosen and remove the magnetic nail guide bushing (B) using the open end wrench supplied.
- 4- Slide the magnetic nail guide (A) off of the driver blade.
- 5- Place both the magnetic nail guide and bushing in the carrying case for safe storage.
- 6- Take the standard nail guide (C) and guide bushing (D) from the carrying case.
- 7- Slide the standard nail guide over the driver blade and inside of the spring coils. Slide the standard nail guide bushing over the driver blade and spring. Screw the standard nail guide bushing into the tool housing and tighten as securely as possible using the open end wrench.



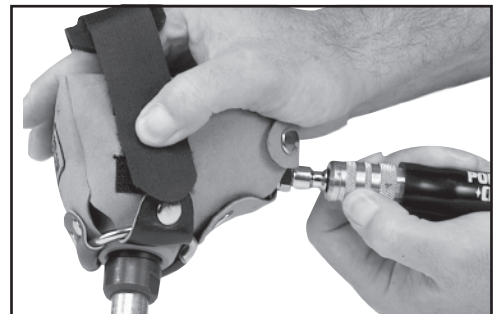
# OPERATION

## PREPARING THE TOOL

- 1- After reading and understanding this entire manual, connect tool to air supply.

**⚠ WARNING:** Never point tool at yourself or others in work area.

- Always connect tool to air supply before loading fasteners.
- Operator and others in work area **MUST** wear safety glasses with side shields. Always wear ANSI Z87.1 approved safety glasses, and hearing protection when preparing or operating the tool.
- Never use a tool that is leaking air, has missing or damaged parts, or requires repair.



## USING THE TOOL

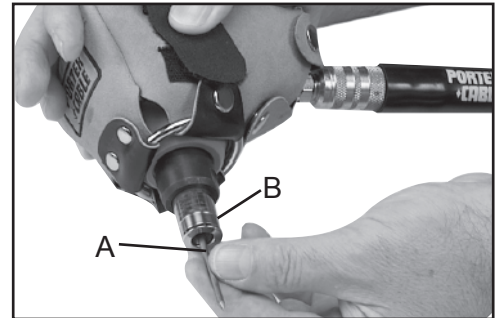
- Complete all steps of PREPARING THE TOOL before using the tool!
- Never attempt to drive a fastener into material that is too hard, or at too steep an angle, or near the edge of the workpiece. The fastener can ricochet causing personal injury.

# OPERATION

**⚠ WARNING:** Disconnect tool from air supply before performing maintenance, clearing a jammed fastener, leaving work area, moving tool to another location, or handing the tool to another person.

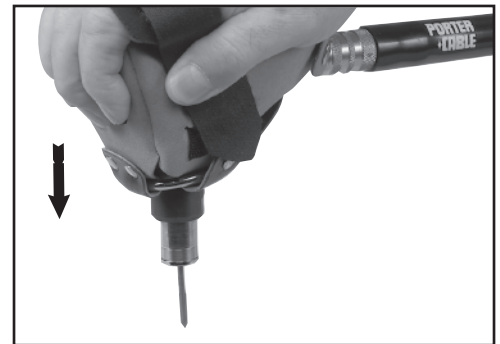
**⚠ WARNING:** Clean and inspect tool daily.

- 1- Attach appropriate nail guide or hammer attachment.
- 2- Orient nail (A) with point down and insert into the nail guide (B).



- 3- Position point of nail in the desired location and push down on the tool. The tool will begin cycling and driving the fastener.

■ Be sure to maintain constant hand pressure in line with the nail until the nail is fully seated. Experiment with the air pressure setting to determine the lowest setting that will consistently perform the job at hand. Air pressure in excess of that required can cause premature wear and/or damage to the tool.



- 4- During each tool cycle, air will exhaust out of ports (A).
- 5- When using hammer attachment, hold fastener by hand until driven deep enough to stay in place. Remove hand to complete driving fastener.



# MAINTENANCE

## CLEAN AND INSPECT DAILY

**⚠ WARNING:** Disconnect tool from air supply before cleaning and inspection. Correct all problems before placing the tool back in use.

- Wipe tool clean and inspect for wear or damage. Use non-flammable cleaning solutions to wipe exterior of tool only if necessary. DO NOT SOAK tool with cleaning solutions. Such solutions can damage internal parts.
- Keep all screws as well as nail guide bushing tight. A 4mm hex wrench and 24 x 30mm open end wrenches are provided. Loose screws and bushings can cause personal injury or damage tool.
- If tool is used without an in-line oiler, place 5 or 6 drops of Porter-Cable Air Tool Oil into the air inlet of the tool at the beginning of each workday.

## SERVICE AND REPAIRS

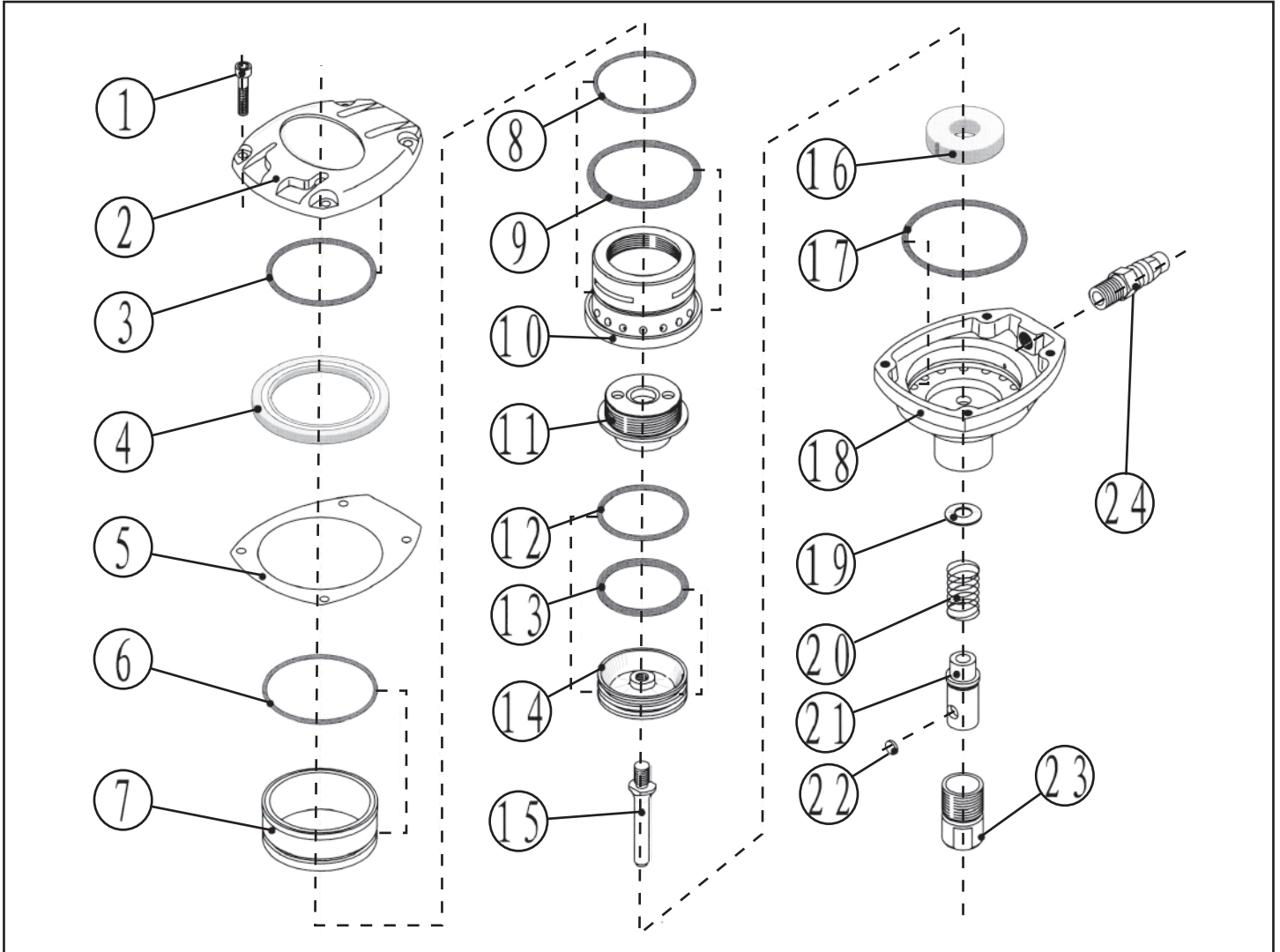
- All quality tools will eventually require servicing or replacement of parts due to wear from normal use. These operations should ONLY be performed by an AUTHORIZED SERVICE STATION.
- All repairs made by these agencies are fully guaranteed against defective material and workmanship. We cannot guarantee repairs made or attempted by anyone other than these agencies.

# TROUBLESHOOTING

**⚠ WARNING:** Disconnect tool from air supply before performing any Service Procedure!

SYMPTOM	PROBLEMS	SOLUTIONS
1. Air leak near top of tool.	<ul style="list-style-type: none"> <li>• Loose screws.</li> <li>• Worn or damaged O-rings or seals.</li> </ul>	<ul style="list-style-type: none"> <li>• Tighten cap screws.</li> <li>• Install Overhaul Kit.</li> </ul>
2. Tool Leaks air or will not function.	<ul style="list-style-type: none"> <li>• Internal valve has shifted.</li> </ul>	<ul style="list-style-type: none"> <li>• If the tool is dropped after the air pressure is removed from the tool, the internal valve mechanism may shift into the open position. When connected to the compressed air source, the tool will not operate due to an air leak. To reset the internal valve to the closed position, disconnect the air supply and sharply impact the tool cap against a piece of wood. Connect the air supply hose: The air pressure will seat the valve in the close position.</li> </ul>
3. Tool does nothing or operates sluggishly.	<ul style="list-style-type: none"> <li>• Inadequate air supply.</li> <li>• Inadequate lubrication.</li> <li>• Worn or damaged O-rings or seals.</li> </ul>	<ul style="list-style-type: none"> <li>• Verify adequate air supply.</li> <li>• Put 5 to 6 drops of oil into air inlet.</li> <li>• Install Overhaul Kit.</li> </ul>
4. Air leak near bottom of tool.	<ul style="list-style-type: none"> <li>• Loose screws.</li> <li>• Worn or damaged O-ring or bumper.</li> </ul>	<ul style="list-style-type: none"> <li>• Tighten cap screws</li> <li>• Install Overhaul Kit.</li> </ul>
5. Other.		<ul style="list-style-type: none"> <li>• Contact a your local distributor.</li> </ul>

# EXPLODED DIAGRAM & PARTS LIST



# EXPLODED DIAGRAM & PARTS LIST

No	Description	Specification	Quantity
1	Set Screw		4
2	Cylinder Cap		1
3	O-Ring	53.7×2.65	1
4	Air-closed Ring		1
5	Cap Seal		1
6	O-Ring	58.1×1.88	1
7	Sleeve		1
8	O-Ring	50×1.95	1
9	Ring		1
10	Cylinder		1
11	Inner Bumper		1
12	O-Ring	42.9×2.6	1
13	O-Ring	41.2×3.5	1
14	Mimi Piston		1
15	Drive		1
16	Outer Bumper		1
17	O-Ring	61.3×2.7	1
18	Case		1
19	Saddle Spring Washing		1
20	Spring		1
21	Eccentric Sleeve-positing		1
22	Magnetic Block		1
23	Outer Nose		1
24	Connector	1/4"	1