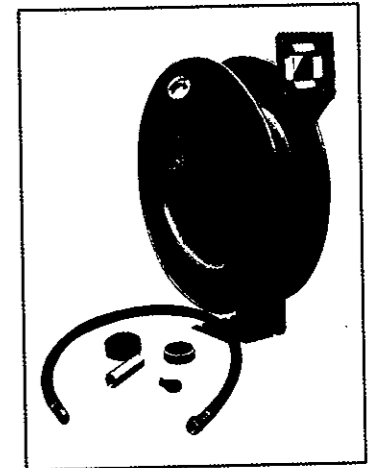




Assembly & Instruction Manual

50-FT INDUSTRIAL HOSE REEL (WITH 50-FT HOSE)

Model 1330



Distributed Exclusively By



THANK YOU FOR BUYING CUMMINS INDUSTRIAL TOOLS
Your new 50-FT Industrial has been engineered and
manufactured to Cummins tools high standards for
dependability, ease of operation, and operator safety. properly
cared for, it will give you years of rugged, trouble-free performance

CAUTION: Carefully read through this entire operator's manual before using your new machine

Pay close attention to the Rules for Safe Operation, Warnings, and Cautions. If you use your
machine properly and only for what it is intended, you will enjoy years of safe, reliable service.

SAVE THIS MANUAL FOR FUTURE REFERENCE

Safety Warnings and Precautions

WARNING: When using tool, basic safety precautions should always be followed to reduce the risk of personal injury and damage to equipment.

Read all instructions before using this tool!

1. **Keep work area clean.** Cluttered areas invite injuries.
2. **Observe work area conditions.** Do not use machines or power tools in damp or wet locations. Don't expose to rain. Keep work area well lighted.
3. **Keep children away.** Children must never be allowed in the work area. Do not let them handle machines, tools, or extension cords.
4. **Store idle equipment.** When not in use, tools must be stored in a dry location to inhibit rust. Always lock up tools and keep out of reach of children.
5. **Use the right tool for the job.** Do not attempt to force a small tool or attachment to do the work of a larger industrial tool. There are certain applications for which this tool was designed. It will do the job better and more safely at the rate for which it was intended. Do not modify this tool and do not use this tool for a purpose for which it was not intended.
6. **Dress properly.** Do not wear loose clothing or jewelry as they can be caught in moving parts. Protective, electrically non-conductive clothes and non-skid footwear are recommended when working. Wear restrictive hair covering to contain long hair.
7. **Use eye protection.** Always wear ANSI approved impact safety glasses underneath a full face shield during use. Also, wear heavy duty work gloves.
8. **Do not overreach.** Keep proper footing and balance at all times. Do not reach over or across running machines.
9. **Maintain tools with care.** Keep tools sharp and clean for better and safer performance. Follow instructions for lubricating and changing accessories. The handles must be kept clean, dry, and free from oil and grease at all times.
10. **Remove adjusting keys and wrenches.** Check that keys and adjusting wrenches are removed from the tool or machine work surface before starting work.
11. **Stay alert.** Watch what you are doing, use common sense. Do not operate any tool when you are tired.
12. **Check for damaged parts.** Before using any tool, any part that appears damaged should be carefully checked to determine that it will operate properly and perform its intended function. Any part that is damaged should be replaced.
13. **Replacement parts and accessories.** When servicing, use only identical replacement parts. Use of any other parts will void the warranty. Only use accessories intended for use with this tool. Approved accessories are available from Cummins Industrial Tools.
14. **Do not operate tool if under the influence of alcohol or drugs.** Read warning labels on prescriptions to determine if your judgment or reflexes are impaired while taking drugs. If there is any doubt, do not operate the tool.

Warning: The warnings, cautions, and instructions discussed in this instruction manual cannot cover all possible conditions and situations that may occur. It must be understood by the operator that common sense and caution are factors which cannot be built into this product, but must be supplied by the operator.

Industrial Air/Water Hose Reel

Specifications:

The reel has Spring Driven Automatic Rewind.

Locking Ratchet to hold the desired length of hose.

Capacity: .50 feet or 25 feet of 3/8" hose or 50 feet or 25 feet of 1/2" hose

.Air Inlet 3/8" Brass NPT or 1/4" Brass NPT

.Hose Outlet: 3/8" Brass NPT or 1/4" Brass NPT

.Maximum Pressure: 250 PSI

.Maximum Air Flow: 25 CFM

. Read the following precautions and instructions before assembly or using.

. Failure to comply with instructions could result in personal injury and or property damage.

. Keep this literature in a dry place for future reference.

Safety Precautions

1. Make sure incoming pressure does not exceed 250 PSI.
2. Use proper eye protection when assembling and using the reel.
3. Assemble the hose reel on a clean work bench free of debris.
4. Use soap and water when checking for air leaks.
5. Do not expose fingers or hands directly to the reel. It will result in severe body injury.
6. Keep children away from the work area.

Installation of Reel

Note:

- 1) Install the reels above 10 feet from the floor.
- 2) If the reel you have bought is unassembleable you must purchase the proper hose and attach hose to reel according to the installation instructions.
- 3) You must purchase hardware for mounting the reel. Provide side where you will to mount reel before purchasing the hardware. Hardware is provided different locations.

1. The Reel Mounting Base has two slots for easy installation and two 1/2" (or 12.7mm) drilled holes. You must use a mounting Patten: 3" x 4.8" (figure 3) for location on floor ceiling wall.

2. Reel is supplied with Guide Arm and Mounting Base. Mount position If required. see "Typical Mounting Positions" (figure 2). and attach the Guide Arm accordingly:

(I) Pull out some hose and let Reel latch.

(II) Take away four bolts connecting Guide Arm and Support Post.

(III) Put Guide Arm in proper position, put four bolts pack, then tighten them.

3. Put 4 bolts (1/2" or 12.7mm) through 4 holes in the mounting base and tighten it to ceiling/floor/wall so reel can be fastened into position.

4. Apply teflon tape or thread sealant to Inlet Hose threads and attach one end to Reel Inlet.

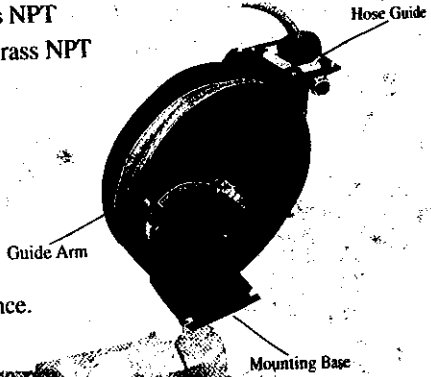


Figure 1.

Connect another and to the outlet of the compressor or

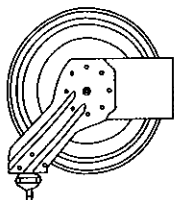
Note: 1) Must use a FLEXIBLE inlet hose.

2) A swivel type connects is required on air compressor.

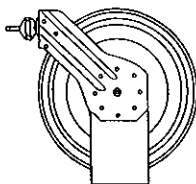
5. Apply teflon tape or thread sealant to Outlet Hose fitting. Match outlet to air tools

Check whole connection for leakage, and Hose Reel for continued operation (see "Operation").

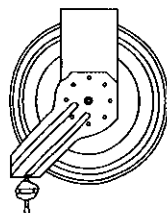
6. If Hose Stopper adjustment is required to reach air tools easily, latch the Hose at the required length. Loosen stopper bolts, move stopper to desired position and tighten stopper bolts. Unlatch the Hose.



Wall



Floor



Ceiling

Figure 2.

Installation of Hose

1. Securely stabilize the reel.
2. Wind the Reel Drum clockwise (facing the Swivel) until the spring is tight.
3. **Be Extremely Cautious!** Back off approximately two turns and lock the Reel Drum from rotating.
4. Insert the male fitting end of the hose through the four Roller Guide Arm and through the cut-out in the side of the Drum Flange.
5. The male hose fitting should now be on the outside of the Drum. Apply teflon tape or thread sealant and connect Hose Fitting to the Swivel Joint and secure the Hose rigidly with the Hose Clamp.

Note:

The Hose Clamp restrains the Hose when fully extended, from pulling its fittings out at the Swivel Joint.

6. Carefully release the Locking Ratchet and **Slowly** allow the Hose to retract onto the Reel.

Note: Final Spring Tension Adjustment is accomplished by adding wraps of Hose around the Drum (to increase tension) or subtracting Wraps of Hose (to decrease tension).

Operation

1. Check Reel for correct operation by slowly pulling out the Hose. A "clicking" noise will be heard every half revolution of the Drum.
2. **TO LATCH** the Reel, pull out the Hose and allow it to retract after hearing the first, second or third "click"
3. **TO UNLATCH**, slowly pull out the Hose until the "clicking" noise stops, then let the Hose retract until Hose Stopper rests against the Hose Guide.

NOTE:

Do not let hose to recoil with out restraining recoil speed. Never release the hose when rewinding.

4. Periodically check the Rose wear and use Swivel leak.

Adjustment of Spring Tension

1. Disconnect Inlet Hose
2. Pull out 6" for 2mm of Hose and latch the drum.
3. Add one wrap of Hose to the Drum to increase tension of take away one wrap to decrease tension.
4. Unlatch the Drum and check tension.
- 5 Connect Inlet Hose.

Replacemnt of Swivel Seal

1. Take away Inlet Hose from Swivel (6).
2. Disconnect Hose from swivel.
3. Unscrew Swivel from shaft (34).
4. Remove Cirelip on swivel. pull out Shaft from Body.
5. Replace the seals and reassemble Swivel.
6. Fit Hose to Swivel then fit Swivel to Roll properly.
7. Reattach Inlet Hose.

Replacement of Spring Canister

1. Pull out approx. 1m (3ft) of Hose and latch the Drum.
2. Take away outlet air tools and Hose stopper (28)
3. Carefully unlatch the Reel and **firmly hold the Drum**. Allow the Drum to slowly unwind until it stops.
4. Remove the Swivel (6). Retaining ring (31) and Spacer (30)
5. Remove the two or four nuts located on the Base (4) side, inside the Drum cavity. Do not attempt to remove the Spring Canister nuts.
6. Pull Spring Canister (1) off Drum axle (13).
7. Reverse above procedure to re-assemble.
8. Rewind the reel by turning the drum three complete turns clockwise (from Swivel side) and latch the drum.
9. Feed the Hose through the Hose Guide. Fit Hose stopper. then unlatch the Drum. Hose Stopper should sit snugly against the hose guide.

Replacement of Hose

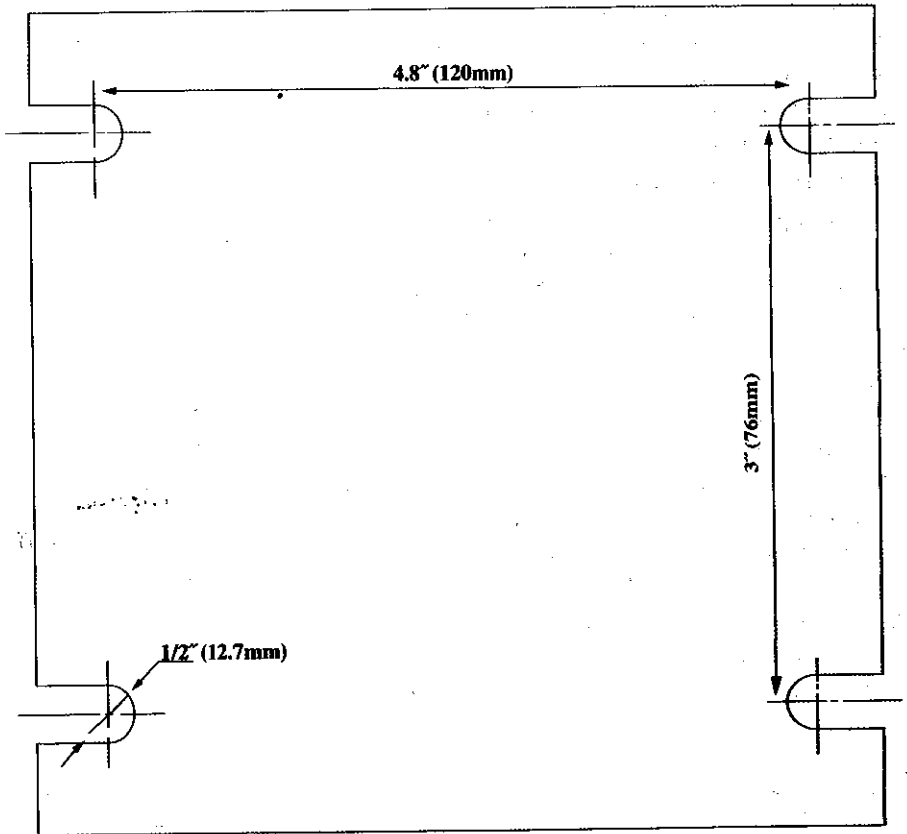
1. Securely stabilize the Reel
2. Pull out all the Hose and lock the Reel in that position.
Caution: Make sure reel is securely locked and will not rotate back.
3. Remove Hose Clamps from Hose.
4. Carefully disconnect Hose from Swivel Joint on side of Reel and remove old Hose
5. Remove hose guard and hose stopper from old hose and fit these parts to the new hose in the same position.
6. Feed new Hose MALE first and through the four Roller Guide. Arm and through the cut-out slot on the Drum Flange.
7. The MALE fitting should now be on the outside of the Drum, Apply teflon tape or thread sealant and connect Hose Fitting to the Swivel Joint. Secure Hose omit with Hose Clamp.

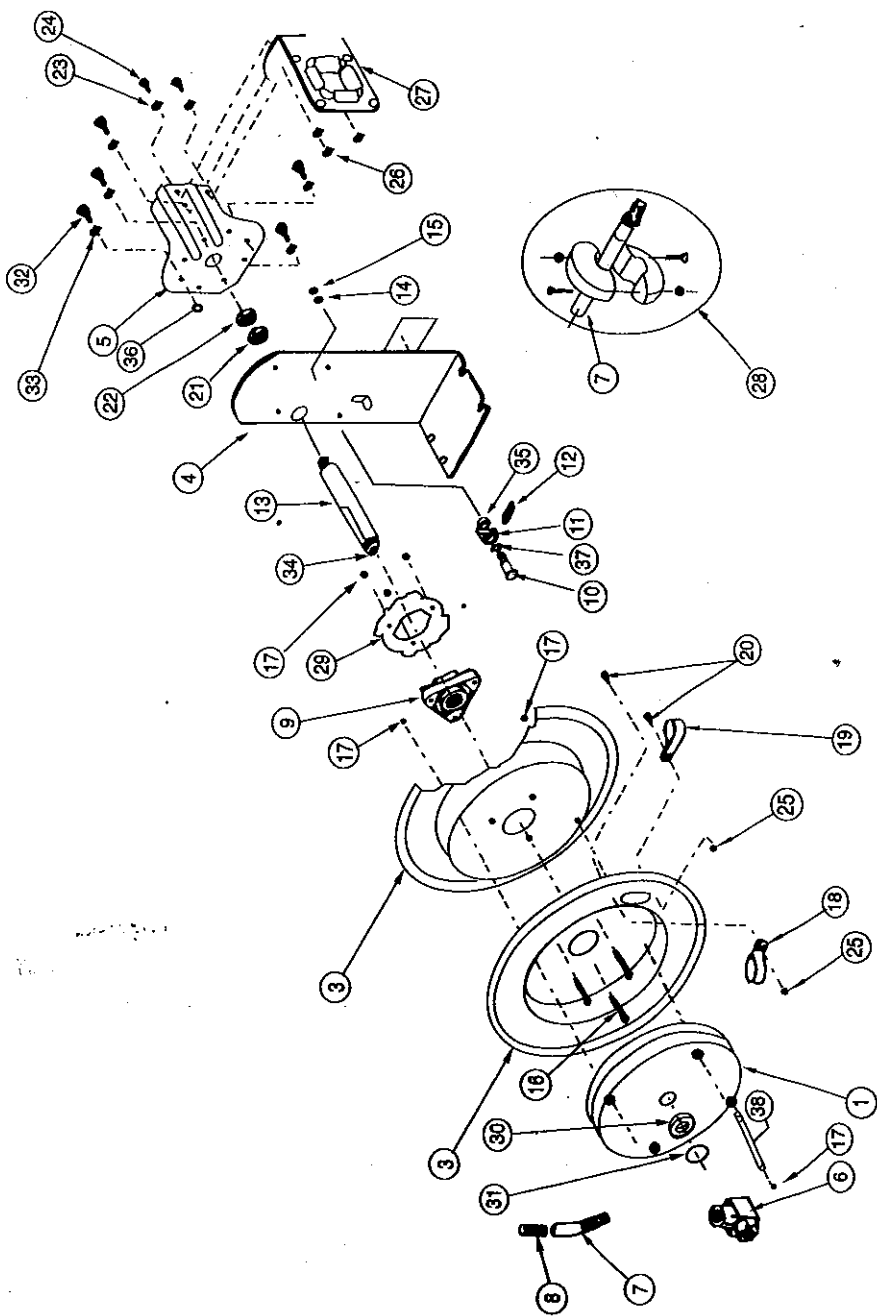
Note:

The Hose Clamp restrains the Hose when fully extended from pulling its fitting out at the Swivel Joint.

8. **Carefully** release the Locking Ratchet and **Slowly** allow the hose to retract onto the Reel.

Note: Final Spring Tension Adjustment is accomplished by adding the wraps of Hose around the Drum (to increase tension) or subtracting wraps of Hose (to decrease tension).





Parts List

Part No.	Description	Remark
1	Spring	
2	Drum	
3	Drum	
4	Base	
5	Arm	
6	Swivel (including swivel part, rigid part, 2 O-ring and label)	
7	Hose	Reel attached with hose
	Hose	Reel without hose
8	Guard H	
9	Assembly Hub Bearing	
10	Bolt	
11	Cam, Locking	
12	Spring, Dog	
13	Axle	
14	Washer	
15	Nut	
16	Bolt	
17	Nut	
18	Clamp	
19	Clamp	
20	Bolt	
21	Washer, Bolt	
22	Nut	
23	Washer	
24	Bolt	
25	Nut, omit	
26	Nut, Lock	
27	Assembly Roller Bracket	
28	Ball stop	
29	Locking ring	
30	Washer Spacer	
31	Retaining ring	
32	Bolt	
33	Washer, Lock	
34	Setscrew	
35	Washer, Spacer	
36	Nut	
37	Washer, Spacer	
38	Bolt	