



# Assembly & Instruction Manual

## AIR RATCHET WRENCH 1/4" DRIVE

**Model 1149**



**Distributed Exclusively By**



**THANK YOU FOR BUYING CUMMINS INDUSTRIAL TOOLS**

Your new Air Ratchet Wrench has been engineered and manufactured to Cummins tools high standards for dependability, ease of operation, and operator safety, properly cared for, it will give you years of rugged, trouble-free performance

**CAUTION:** Carefully read through this entire operator's manual before using your new machine

Pay close attention to the Rules for Safe Operation, Warnings, and Cautions. If you use your machine properly and only for what it is intended, you will enjoy years of safe, reliable service.

**SAVE THIS MANUAL FOR FUTURE REFERENCE**



**WARNING**

To reduce risk of injury, everyone using, installing, maintaining, repairing, changing accessories, or working near this tool must read and understand these instructions before performing any work task.

Customer Service Postal Address:  
1290 35 Road  
Minden, NE 68959  
voice: 1-(308) 832-2070  
fax: 1-(308) 832-2069

You can purchase additional items at [www.cumminstools.com](http://www.cumminstools.com)

## Specifications

Air Consumption	4 CFM @ 90 PSI	Maximum Torque	15 Ft. Lbs.
Drive Size	1/4"	Air Inlet	1/4" NPT Female
Recommended Air Pressure	90 PSI	No Load Speed	150 RPM

## Save This Manual

You will need the manual for the safety warnings and precautions, assembly instructions, operating and maintenance procedures, parts list and assembly diagram. Keep your invoice with this manual. Write the invoice number on the inside of the front cover. Keep the manual and invoice in a safe and dry place for future reference.

## Safety Warnings and Precautions

**WARNING: When using tool, basic safety precautions should always be followed to reduce the risk of personal injury and damage to equipment.**

**Read all instructions before using this tool!**

1. **Keep work area clean.** Cluttered areas invite injuries.
2. **Observe work area conditions.** Do not use machines or power tools in damp or wet locations. Don't expose to rain. Keep work area well lighted. Do not use electrically powered tools in the presence of flammable gases or liquids.
3. **Keep children away.** Children must never be allowed in the work area. Do not let them handle machines, tools, extension cords, or air hoses.
4. **Store idle equipment.** When not in use, tools must be stored in a dry location to inhibit rust. Always lock up tools and keep out of reach of children.
5. **Use the right tool for the job.** Do not attempt to force a small tool or attachment to do the work of a larger industrial tool. There are certain applications for which this tool was designed. It will do the job better and more safely at the rate for which it was intended. Do not modify this tool and do not use this tool for a purpose for which it was not intended.
6. **Dress properly.** Do not wear loose clothing or jewelry as they can be caught in moving parts. Protective, electrically non-conductive clothes and non-skid footwear are recommended when working. Wear restrictive hair covering to contain long hair.
7. **Use eye and ear protection.** Always wear ANSI approved impact safety goggles and hearing protection.
8. **Do not overreach.** Keep proper footing and balance at all times. Do not reach over or across running machines or air hoses.
9. **Remove adjusting keys and wrenches.** Check that keys and adjusting wrenches are removed from the tool or machine work surface before attaching to the air supply.
10. **Disconnect air supply.** Disconnect air hose when not in use.

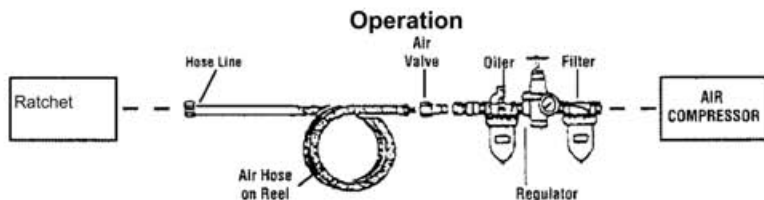
11. **Maintain tools with care.** Keep tools clean for better and safer performance. Follow instructions for lubricating and changing accessories. Inspect tool cords and air hoses periodically and, if damaged, have them repaired by an authorized technician. The handles must be kept clean, dry, and free from oil and grease at all times.
12. **Avoid unintentional starting.** Do not carry any tool with your finger on the Throttle Lever, whether it is attached to the air supply or not.
13. **Stay alert.** Watch what you are doing, use common sense. Do not operate any tool when you are tired.
14. **Check for damaged parts.** Before using any tool, any part that appears damaged should be carefully checked to determine that it will operate properly and perform its intended function. Check for alignment and binding of moving parts; any broken parts or mounting fixtures; and any other condition that may affect proper operation. Any part that is damaged should be properly repaired or replaced by a qualified technician. Do not use the tool if the Throttle Lever doesn't operate properly.
15. **Guard against electric shock.** Prevent body contact with grounded surfaces such as pipes, radiators, ranges, and refrigerator enclosures.
16. **Replacement parts and accessories.** When servicing, use only identical replacement parts. Use of any other parts will void the warranty. Only use accessories intended for use with this tool. Approved accessories are available from Cummins Industrial Tools.
17. **Do not operate tool if under the influence of alcohol or drugs.** Read warning labels if taking prescription medicine to determine if your judgement or reflexes are impaired while taking drugs. If there is any doubt, do not operate the tool.
18. **Use proper size and type extension cord.** If an extension cord is required, it must be of the proper size and type to supply the correct current to the compressor without heating up. Otherwise, the extension cord could melt and catch fire, or cause electrical damage to the compressor. Check your air compressor's manual for the appropriate size cord.
19. **Maintenance.** For your safety, maintenance should be performed regularly by a qualified technician.
20. **Compressed air only.** Never use combustible gas as a power source.
21. **Do not exceed the recommended air pressure of 90 PSI.**

**Note: Performance of the compressor (if powered by line voltage) may vary depending on variations in local line voltage. Extension cord usage may also affect tool performance.**

**Warning: The warnings, cautions, and instructions discussed in this instruction manual cannot cover all possible conditions and situations that may occur. It must be understood by the operator that common sense and caution are factors which cannot be built into this product, but must be supplied by the operator.**

## Unpacking

When unpacking, check to make sure the parts listed on page 6 are included. If any parts are missing or broken, please call Cummins Industrial Tools at the number on the cover of this manual as soon as possible.



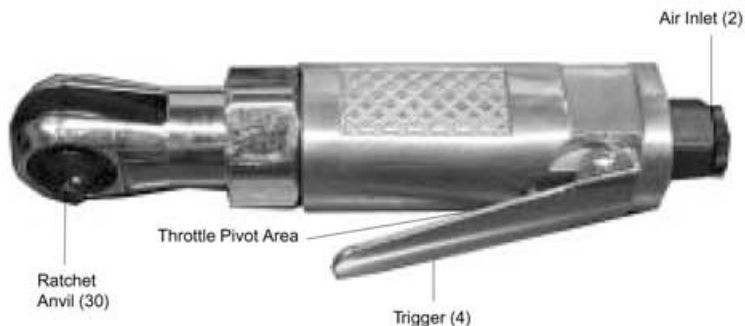
For best service you should incorporate an oiler, regulator, and inline filter, as shown in the diagram above. Hoses, couplers, oilers, regulators, and filters are all available at Cummins Industrial Tools.

1. You will need to prepare the included  $\frac{1}{4}$ " air connector to connect to the air inlet on the Ratchet. First, wrap the  $\frac{1}{4}$ " air connector with pipe thread seal tape before threading it into the Air Inlet (2). Connect the  $\frac{3}{8}$ " ID Air Source Hose to a quick-connect coupler (not included), and then to the Ratchet.

**Note:** If you are not using an automatic oiler system, before operation, add a few drops of Pneumatic Tool Oil to the Air Inlet (2). Add a few drops more after each hour of continual use.

2. Set the air pressure on your compressor to 90 PSI. **Do not exceed the recommended air pressure of 90 PSI.**
3. Check the air connection for leaks. Disconnect from the air source.

FIGURE 1



## Air Ratchet Operation

FIGURE 2



**Warning!** Do not use a “cheater” or other extension to increase torque for this tool. Do not exceed the maximum torque rating on this tool.

**Warning!** Disconnect the Ratchet from the air source when attaching and removing sockets. There is no safety lock mechanism on this tool; always disconnect from the air source when not in use.

Refer to Figure 2, above.

1. Attach a  $\frac{1}{4}$ ” drive socket to the Ratchet Anvil (30).
2. By following the directions on page 4, attach the Ratchet to the air source hose.
3. Gently press the Trigger (4) to activate the Ratchet. Do not force the unit; allow it to do the work for you. To change direction (loosen vs. tighten), stop the tool and move it away from the workpiece, then turn the Reverse Button (29).
4. To adjust the torque, re-adjust the air pressure by changing the setting on the compressor.

**Warning!** Do not set the air pressure on the compressor above the recommended air pressure of 90 PSI.

5. When you are finished working, turn off the compressor.

**Warning!** There may still be air in the Ratchet. Squeeze the Trigger (4) and activate the Ratchet to expel any air still inside the tool.

6. Disconnect the air source hose. Remove the socket.

## Maintenance

**Warning!** Always disconnect the Ratchet from the air source hose before attempting any maintenance.

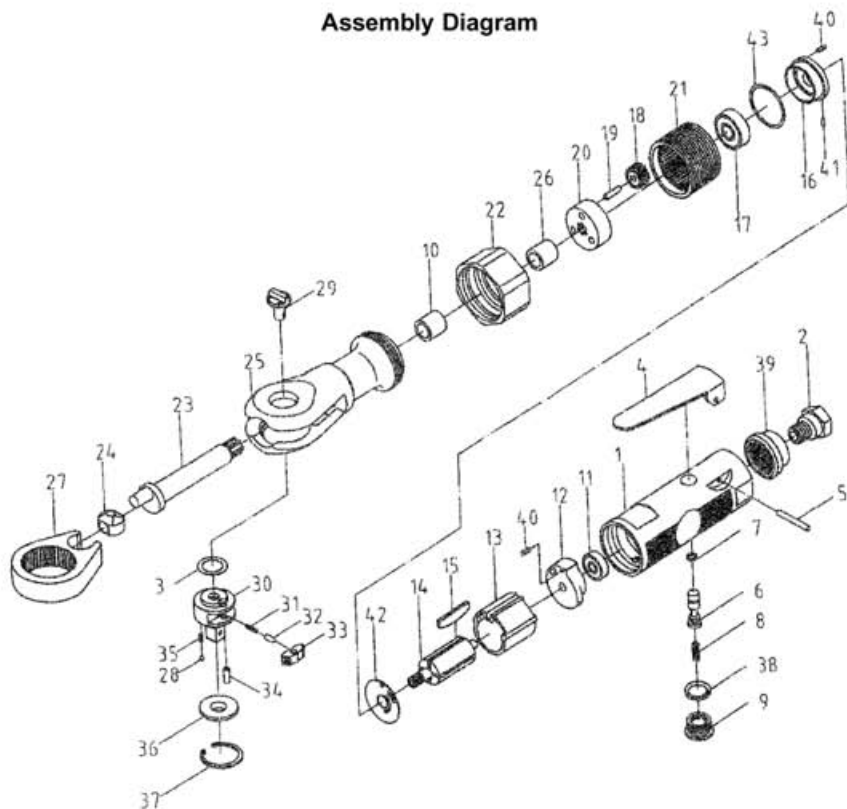
1. Wipe the unit down with a lint free cloth.
2. Periodically apply a high grade, light machine oil to the Throttle Pivot area (see FIGURE 1).
3. Make sure the Ratchet Anvil (30), the Air Inlet (2), and the Reverse Button (29) are clear of grease, dirt, or debris.

### Parts List

Part	Description	Qty.	Part	Description	Qty.
1	Housing	1	23	Crankshaft	1
2	Air Inlet	1	24	Drive Bushing	1
3	Washer	1	25	Ratchet Housing	1
4	Trigger	1	26	Bushing	1
5	Pin	1	27	Ratchet Yoke	1
6	Valve Stem	1	28	Ball Bearing	2
7	O-ring	1	29	Reverse Button	1
8	Spring	1	30	Ratchet Anvil	1
9	Valve Plug	1	31	Spring	1
10	Bushing	1	32	Lock Pin	1
11	Bearing	1	33	Ratchet Pawl	1
12	End Plate	1	34	Pin	1
13	Cylinder	1	35	Spring	2
14	Rotor	1	36	Washer	1
15	Rotor Blade	4	37	Retaining Ring	1
16	Front Plate	1	38	O-ring	1
17	Bearing	1	39	Muffler Cover	1
18	Gear	3	40	Pin	2
19	Pin	3	41	Pin	1
20	Gear Plate	1	42	Washer	1
21	Thread Ring Gear	1	43	Washer	1
22	Cap	1			

**NOTE:** Some parts are listed and shown for illustration purposes only and are not available individually as replacement parts.

## Assembly Diagram



### PLEASE READ THE FOLLOWING CAREFULLY

THE MANUFACTURER AND/OR DISTRIBUTOR HAS PROVIDED THE PARTS DIAGRAM IN THIS MANUAL AS A REFERENCE TOOL ONLY. NEITHER THE MANUFACTURER NOR DISTRIBUTOR MAKES ANY REPRESENTATION OR WARRANTY OF ANY KIND TO THE BUYER THAT HE OR SHE IS QUALIFIED TO MAKE ANY REPAIRS TO THE PRODUCT OR THAT HE OR SHE IS QUALIFIED TO REPLACE ANY PARTS OF THE PRODUCT. IN FACT, THE MANUFACTURER AND/OR DISTRIBUTOR EXPRESSLY STATES THAT ALL REPAIRS AND PARTS REPLACEMENTS SHOULD BE UNDERTAKEN BY CERTIFIED AND LICENSED TECHNICIANS AND NOT BY THE BUYER. THE BUYER ASSUMES ALL RISK AND LIABILITY ARISING OUT OF HIS OR HER REPAIRS TO THE ORIGINAL PRODUCT OR REPLACEMENT PARTS THERETO, OR ARISING OUT OF HIS OR HER INSTALLATION OF REPLACEMENT PARTS THERETO.