



## Assembly & Instruction Manual

# TOUCH UP SPRAY GUN WITH 8OZ SIPHON CUP

Model **1128**



Distributed Exclusively By



**CUMMINS**

**INDUSTRIAL TOOLS**



**THANK YOU FOR BUYING CUMMINS INDUSTRIAL TOOLS**

Your new Touch up Spray Gun has been engineered and manufactured to Cummins tools high standards for dependability, ease of operation, and operator safety. properly cared for, it will give you years of rugged, trouble-free performance

**CAUTION:** Carefully read through this entire operator's manual before using your new machine

Pay close attention to the Rules for Safe Operation, Warnings, and Cautions. If you use your machine properly and only for what it is intended, you will enjoy years of safe, reliable service.

**SAVE THIS MANUAL FOR FUTURE REFERENCE**

Customer Service Postal Address:  
1290 35 Road  
Minden, NE 68959  
voice: 1-(308) 832-2070  
fax: 1-(308) 832-2069

You can purchase additional  
items at [www.cumminstools.com](http://www.cumminstools.com)

## Safety Warnings and Precautions

**WARNING:** When using tool, basic safety precautions should always be followed to reduce the risk of personal injury and damage to equipment.

**Read all instructions before using this tool!**

1. **Keep work area clean.** Cluttered areas invite injuries.
2. **Observe work area conditions.** Do not use machines or power tools in damp or wet locations. Don't expose to rain. Keep work area well lighted.
3. **Keep children away.** Children must never be allowed in the work area. Do not let them handle machines, tools, or extension cords.
4. **Store idle equipment.** When not in use, tools must be stored in a dry location to inhibit rust. Always lock up tools and keep out of reach of children.
5. **Use the right tool for the job.** Do not attempt to force a small tool or attachment to do the work of a larger industrial tool. There are certain applications for which this tool was designed. It will do the job better and more safely at the rate for which it was intended. Do not modify this tool and do not use this tool for a purpose for which it was not intended.
6. **Dress properly.** Do not wear loose clothing or jewelry as they can be caught in moving parts. Protective, electrically non-conductive clothes and non-skid footwear are recommended when working. Wear restrictive hair covering to contain long hair.
7. **Use eye protection.** Always wear ANSI approved impact safety glasses underneath a full face shield during use. Also, wear heavy duty work gloves.
8. **Do not overreach.** Keep proper footing and balance at all times. Do not reach over or across running machines.
9. **Maintain tools with care.** Keep tools sharp and clean for better and safer performance. Follow instructions for lubricating and changing accessories. The handles must be kept clean, dry, and free from oil and grease at all times.
10. **Remove adjusting keys and wrenches.** Check that keys and adjusting wrenches are removed from the tool or machine work surface before starting work.
11. **Stay alert.** Watch what you are doing, use common sense. Do not operate any tool when you are tired.
12. **Check for damaged parts.** Before using any tool, any part that appears damaged should be carefully checked to determine that it will operate properly and perform its intended function. Check for cracks or chips in the taps and dies. Any part that is damaged should be replaced.
13. **Replacement parts and accessories.** When servicing, use only identical replacement parts. Use of any other parts will void the warranty. Only use accessories intended for use with this tool. Approved accessories are available from Cummins Industrial Tools.
14. **Do not operate tool if under the influence of alcohol or drugs.** Read warning labels on prescriptions to determine if your judgment or reflexes are impaired while taking drugs. If there is any doubt, do not operate the tool.
15. **The flutes on these tools are sharp and may cut you.** Handle with care.
16. **Do not use any high-speed means, such as a lathe or drill press, to cut threads with these Taps and Dies.** High-speed use may overheat the tool, causing loss of heat-treatment and premature failure. Use of high-speed means will void the warranty.
17. **Taps and Dies are heat-treated, and not designed to be sharpened.** After considerable use, corrosion, or high-speed use these tools may lose their cutting edge. They will then be less effective and may break. Replacement Taps and Dies are available from Cummins Industrial Tools.

**Warning:** The warnings, cautions, and instructions discussed in this instruction manual cannot cover all possible conditions and situations that may occur. It must be understood by the operator that common sense and caution are factors which cannot be built into this product, but must be supplied by the operator.

## SPECIFICATIONS:

Air Inlet ..... 1/4IN.N.P.T  
Hose Size ..... 3/8IN.I.D.  
Nozzle Size ..... 1/16IN.  
Average Air Cons ..... 4.5 CFM

Air Pressure ..... 40 PSI  
Weight ..... 1LB.  
Height ..... 8-3/4IN.

### SPRAY GUN

1. Immerse only the front end of the gun until solvent just covers the fluid connection.
2. Use a bristle brush and solvent to wash off accumulated paint.
3. Do not submerge the entire spray gun in solvent because:
  - a. the lubricant in the leather packings will dissolve and the packing will dry out.
  - b. the lubricant on wear surfaces will dissolve causing harder operation and faster wear.
  - c. residue from dirty solvent may clog the narrow air passages in the gun.
4. Wipe down the outside of the gun with solvent dampened rag.
5. Lubricate gun daily. Use a light machine oil on:
  - a. fluid needle packing.
  - b. air valve packing.
  - c. side port control packing.
  - d. trigger pivot point.

Coat the fluid control spring with Vaseline.

### PRECAUTIONARY NOTE

All parts on a spray gun should be screwed in hand tight at first, this will avoid the possibility of cross threading the parts. If the parts can not be turned by hand easily, make sure you have the correct parts, unscrew, realign, and try again. NEVER use undue force in mating parts.

### AIR NOZZLE, FLUID NOZZLE, NEEDLE ASSEMBLY

1. All nozzles and needles are precision made. They should be handled with care.
2. Except as described in 5, do not make any alterations in the gun. To do so could cause finishing difficulties.
3. To clean nozzles, soak them in solvent to dissolve any dried material, then blow them clean with air.
4. Do not probe any of the holes in the nozzles with metal instruments. If probing is necessary, use only a tool that is softer than brass.
5. Adjust the fluid needle valve so that when gun is triggered, air flow occurs before fluid flow.

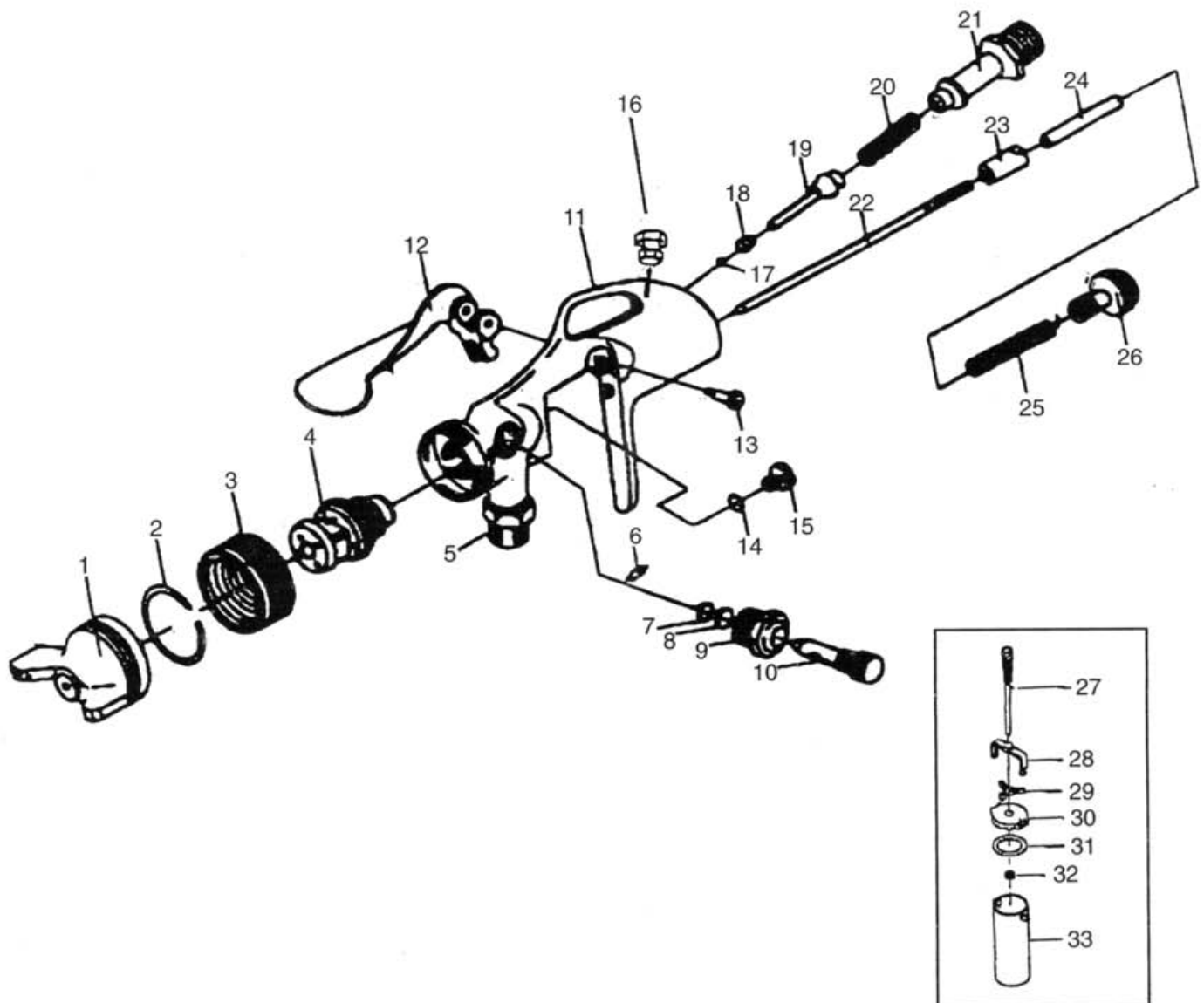
### POINTERS ON CLEANING

A compatible solvent should be siphoned through gun by inserting tube from siphon cup in an open container of solvent. Trigger gun intermittently to thoroughly to thoroughly flush passageways and internal parts.

### WHEN USED WITH PRESSURE CUP

Shut off the air supply to the Pressure Tank and release the pressure in the tank. Hold a piece of cloth over the gun nozzle and pull the trigger. The air will back up through the fluid nozzle and force the fluid out of the hose and into the tank. Remove paint from tank, clean tank and put enough compatible solvent into the tank to clean the hose and gun thoroughly. Spray this through the gun, triggering the gun intermittently until it is clean; then blow out the fluid hose to dry it and remove all traces of materials by attaching it to the air line.

# EXPLODED PARTS VIEW



Parts NO.	Description	QTY
1	NOZZLE. CAP.....	1
2	INNER RING.....	1
3	CAP RING.....	1
4	FLUID NOZZLE.....	1
5	CONNECTION.....	1
6	PIN.....	1
7	RING.....	1
8	PACKING.....	1
9	BODY.....	1
10	STEM.....	1
11	BODY.....	1

Parts NO.	Description	QTY
12	TRIGGER.....	1
13	SCREW TRIGGER.....	1
14	PACKING.....	1
15	NUT.....	1
16	SCREW.....	1
17	PACKING.....	3
18	VALVE NUT.....	1
19	STEM ASSEMBLY.....	1
20	SPRING.....	1
21	AIR CONNECTION.....	1
22	STEM.....	1

Parts NO.	Description	QTY
23	LOCK NUT.....	1
24	REAR LOCKNUT.....	1
25	SPRING.....	1
26	SCREW.....	1
27	SIPHON TUNE.....	1
28	CUP HOOK.....	3
29	TIGHTEN WEDGE.....	1
30	COVER.....	1
31	GASKET.....	1
32	NUT.....	1
33	CUP.....	1