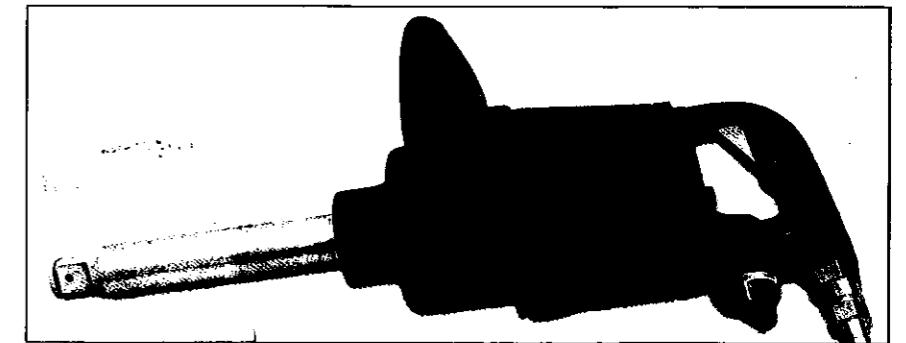




Assembly & Instruction Manual

1" DRIVE AIR IMPACT WRENCH

Model 1122



Distributed Exclusively By

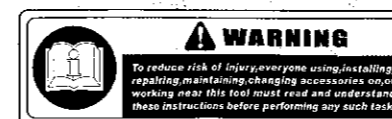


THANK YOU FOR BUYING CUMMINS INDUSTRIAL TOOLS
Your new Air Impact Wrench has been engineered and
manufactured to Cummins tools high standards for
dependability, ease of operation, and operator safety. properly
cared for, it will give you years of rugged, trouble-free performance

CAUTION: Carefully read through this entire operator's manual before using your new machine

Pay close attention to the Rules for Safe Operation, Warnings, and Cautions. If you use your machine properly and only for what it is intended, you will enjoy years of safe, reliable service.

SAVE THIS MANUAL FOR FUTURE REFERENCE



WARNING

To reduce risk of injury, everyone using, installing,
repairing, maintaining, changing accessories, or
working near this tool must read and understand
these instructions before performing any such task.

Customer Service Postal Address:
1290 35 Road
Minden, NE 68959
voice: 1-(308) 832-2070
fax: 1-(308) 832-2069

**You can purchase additional
items at www.cumminstools.com**

Safety Warnings and Precautions

WARNING: When using tool, basic safety precautions should always be followed to reduce the risk of personal injury and damage to equipment.

Read all instructions before using this tool!

1. **Keep work area clean.** Cluttered areas invite injuries.
2. **Observe work area conditions.** Do not use machines or power tools in damp or wet locations. Don't expose to rain. Keep work area well lighted.
3. **Keep children away.** Children must never be allowed in the work area. Do not let them handle machines, tools, or extension cords.
4. **Store idle equipment.** When not in use, tools must be stored in a dry location to inhibit rust. Always lock up tools and keep out of reach of children.
5. **Use the right tool for the job.** Do not attempt to force a small tool or attachment to do the work of a larger industrial tool. There are certain applications for which this tool was designed. It will do the job better and more safely at the rate for which it was intended. Do not modify this tool and do not use this tool for a purpose for which it was not intended.
6. **Dress properly.** Do not wear loose clothing or jewelry as they can be caught in moving parts. Protective, electrically non-conductive clothes and non-skid footwear are recommended when working. Wear restrictive hair covering to contain long hair.
7. **Use eye protection.** Always wear ANSI approved impact safety glasses underneath a full face shield during use. Also, wear heavy duty work gloves.
8. **Do not overreach.** Keep proper footing and balance at all times. Do not reach over or across running machines.
9. **Maintain tools with care.** Keep tools sharp and clean for better and safer performance. Follow instructions for lubricating and changing accessories. The handles must be kept clean, dry, and free from oil and grease at all times.
10. **Remove adjusting keys and wrenches.** Check that keys and adjusting wrenches are removed from the tool or machine work surface before starting work.
11. **Stay alert.** Watch what you are doing, use common sense. Do not operate any tool when you are tired.
12. **Check for damaged parts.** Before using any tool, any part that appears damaged should be carefully checked to determine that it will operate properly and perform its intended function. Any part that is damaged should be replaced.
13. **Replacement parts and accessories.** When servicing, use only identical replacement parts. Use of any other parts will void the warranty. Only use accessories intended for use with this tool. Approved accessories are available from Cummins Industrial Tools.
14. **Do not operate tool if under the influence of alcohol or drugs.** Read warning labels on prescriptions to determine if your judgment or reflexes are impaired while taking drugs. If there is any doubt, do not operate the tool.

Warning: The warnings, cautions, and instructions discussed in this instruction manual cannot cover all possible conditions and situations that may occur. It must be understood by the operator that common sense and caution are factors which cannot be built into this product, but must be supplied by the operator.

AIR PRESSURE AND VOLUME

- If the tool is not performing the specifications jobs, check the following:
- Check the air compressor to see that it has the CFM output to support the air tool:
- Check compressor regulator settings.
- Check to see if the air transmission lines are too small.
- Check to see if the air hose is too small.
- Check to see if the hose fittings and couplings are too small.
- Refer to the catalog specifications for proper air hose size. Use hose that is just long enough to serve the working area. Excessive lengths of hose will cause a drop in pressure.

COMMON PROBLEMS

- Contaminated air such as a dirty air system or water in the system.
- Using the wrong size tool for the job.
- Poor maintenance practices, such as using excessive air pressure or air volume
- Improper or no lubrications.

RULE OF THUMB

- If it takes more than 8 seconds to tighten or loosen a bolt or nut with an air impact wrench, the air wrench is too small or the air compressor CFM is not powerful enough for the job. Continued use in either capacity will cause damage to the tool. following information will assure proper performance.

SAFETY WARNINGS

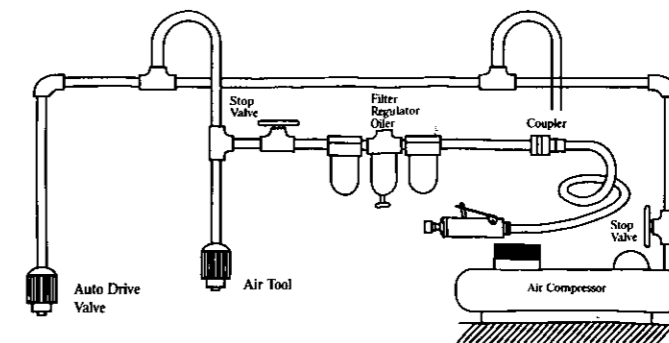
- Never allow an air tool to operate at full throttle without a workload on the tool.
- Never start a percussion type air tool (Chippers, breakers, buster, etc.) without securing the tooling in the retainer and placing the tip against the work surfaces.
- When opening on air grinder, place the abrasive wheel against the work surface immediately after starting.
- Never operate an air tool without proper eye and hand protection.

LUBRICATION

- Use a light oil containing rust inhibitors, such as SAE # 5W or SAE # 1010w.
- Use a grease that is highly water resistant for the front case components on air impact wrenches, grinders, and sanders.

AIR SYSTEM

- Make sure the compressor being used with the air tool supplies adequate output (CFM).
- Equip the air compressor intake with a replaceable air filter that can be easily cleaned.
- Always use moisture traps at the compressor for the main distribution line. Use moisture traps and in line oilers on each downline that is to be used for air tools.
- (See figure) Place oiler as close to the air tool as possible for the best lubrication.

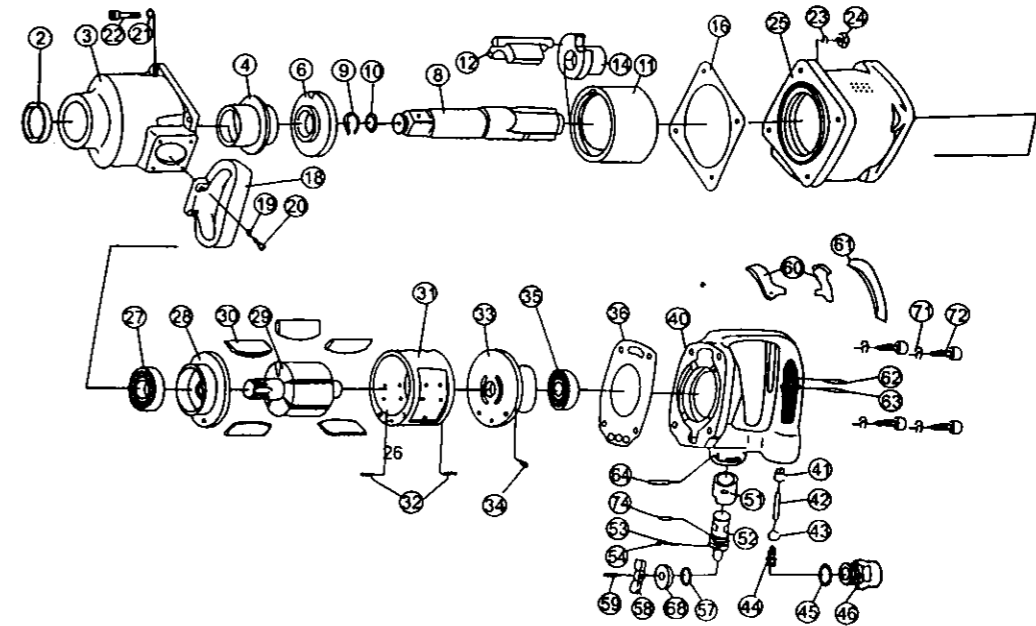


TOOL PRESSURE

- All the air tools operate on 70-100PSI air pressure (90PSI preferred) measured at the tool when the tool is operating. Pressure in excess of 100 PSI will shorten the life of the tool and cause unnecessary down time.

1" AIR IMPACT WRENCH

EXPLODED VIEW



PARTS LIST

◆Parts may be changed with or without notice for improvement.

PARTS No.	NAME OF PARTS	PER SET
2	Oil seal	1
3A	Hammer Case Assembly (No. 2 - No. 1)	
3	Hammer Case	1
4	Hammer Case Bushing	1
6	Side Plate	1
8A	Anvil Assembly (No. 8 - No. 10)	
8	Anvil (8")	1
8A	2" Anvil Assembly (No. 8 - No. 10)	
8	2" Anvil (for 400SA - 2)	1
9	Retainer Ring	1
10	O - Ring	1
11	Hammer Frame	1
12	Pin Hammer	1
14	Driver	1
16	Hammer Case Packing	1
18	D - Handle	1
19	Spring Washer (for D - Handle)	4
20	Hex. Cap Bolt (for D - Handle)	4
21	Spring Washer	4
22	Hex. Cap Bolt	4
25A	Motor Case Assembly (No. 23 - No. 36)	
25	Motor case	1
26	Helixen	4
27	Ball Bearing	1
28	Front End Plate	1
29	Rotor	1
30	Vane	8
31A	Cylinder Assembly (No. 31, No. 32)	
31	Cylinder	1
32	Spring Pin	2
33A	Rear End Plate Assembly (No. 33, No. 34)	
33	Rear End Plate	1

PARTS No.	NAME OF PARTS	PER SET
34	Spring Pin	1
35	Ball Bearing	1
36	Motor Case Packing	1
40A	Outside Lever Frame Handle Assembly (No. 40 - No. 60, No. 62 - No. 74)	
40A	Inside Lever Frame Handle Assembly (No. 40 - No. 74)	
40	Frame Handle	1
41	Throttle Bushing	1
42	Throttle Pin	1
43	Throttle Valve	1
44	Throttle Spring	1
45	O - Ring	1
46	Inter Bushing	1
51	Valve Bushing	1
52	Adjust Valve	1
53	Spring	1
54	Steel Ball	1
57	O - Ring	1
58	Reverse Lever	1
59	Spring Pin	1
60	Outside Lever	1
	Inside Lever	1
61	Rubber (for Inside Lever)	1
62	Spring Pin	1
63	Needle Pin	1
64	Spring Pin	1
68	Valve Washer	1
71	Spring Washer	4
72	Hex. Cap Bolt	4
74	Spring Pin	1